

Pioneer

DJ CONTROLLER

DDJ-SX2



<http://pioneerdj.com/support/>

The Pioneer DJ support site shown above offers FAQs, information on software and various other types of information and services to allow you to use your product in greater comfort.

"TRAKTOR PRO 2"

Settings File Import Guide

Before start –Important–

Pioneer provides a settings file exclusively for use with the Native Instruments “TRAKTOR PRO 2” DJ software. TRAKTOR PRO 2 can be controlled from this unit by importing this file.

- A computer on which TRAKTOR PRO 2 is installed is required.
- Windows users need an exclusive ASIO driver. Please follow the Operating Instructions of DDJ-SX2 to install the ASIO driver software included with DDJ-SX2 in advance (*Mac OS X users do not have to install this driver software).
- To operate TRAKTOR PRO 2 using this unit's buttons, see the separate “DDJ-SX2 Hardware Diagram for TRAKTOR PRO 2” (PDF file) table of supported functions.

Notice:

- Pioneer will accept no responsibility whatsoever for damages resulting from downloading or installing this settings file. Operation of this settings file is not guaranteed.
- Users should take full responsibility for downloading, installing and using this settings file.
- The specifications of this settings file are subject to change without notice.
- Please note that services regarding this settings file may be terminated without notice.


Disclaimer:

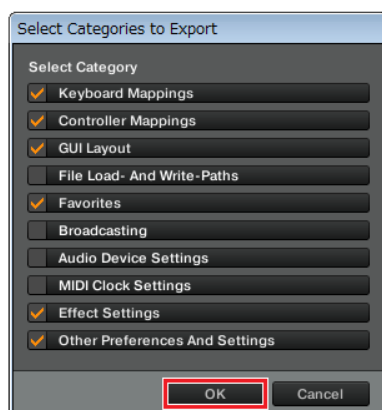
Please note that Pioneer will accept no responsibility whatsoever for loss or damage to the customer's computer caused by the operations based on the information in this Guide. It is advised to use this information at your own risk and on your own responsibility.

Backing up the current settings file

We recommend backing up using the procedure below so that the current settings can be restored if necessary.

— This operation is not necessary for those using TRAKTOR PRO 2 for the first time.

1. Select  (Preference) in the upper right of the screen.
2. On the [Preferences] window, click [Export].
3. Check the items to be backed up, then click [OK]. Give the file an easily identifiable name (e.g.: BackUp.tsi) and save it in the desired location.



Importing a settings file

Note: When another settings file has been imported before, this procedure may not operate properly. In this case, delete the imported settings file before performing this operation. For details, see “Deleting the settings file” on page 2.

1. Save the settings file.

Unzip the downloaded file and save it below location depend on your computer.

— For Windows PC Users

My Documents¥Native Instruments¥Traktor 2.x.x¥Settings

— For Mac OS X Users

Documents/Native Instruments/Traktor 2.x.x/Settings

2. Connect DDJ-SX2 and a computer using the USB cable, then turn on the power of DDJ-SX2.

3. Launch TRAKTOR PRO 2.

4. Select (Preference) in the upper right of the screen.

5. Click [Import] on the [Preferences] window.

Select the “PIONEER_DDJ-SX2_Vxxx.tsi” file saved in step 1.

6. Click [OK] to load the settings file.

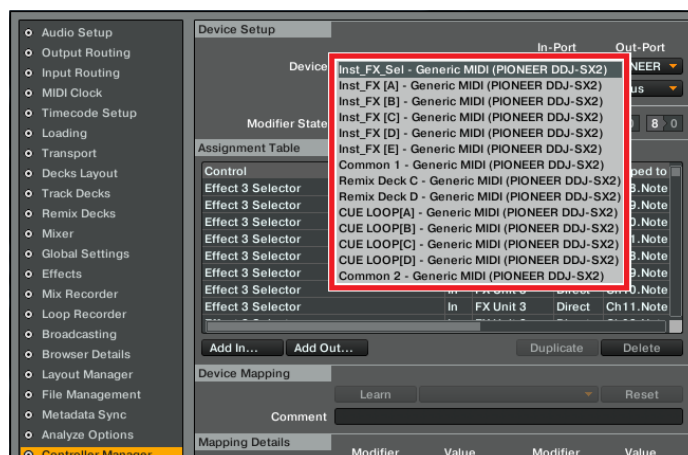
[Audio Device Settings] is not selected at this stage. Tick the checkbox of [Audio Device Settings] and press [OK].



Note: Depending on the computer you use, it may take time to read the settings file or the reaction of the [Preferences] window may **get slow**. However, such behaviors would not cause any problem of the application itself.

7. Device settings

— Open the [Controller Manager] and ensure the items in the [Device] dropdown menu in the Device Setup screen is as shown below.



- If you find any item other than the ones listed in the above drop down menu, please delete them. For details, see “Deleting the settings file”
- If you find (n/a) in any item, please select it and change the settings of [In-Port] and [Out-Port] to [PIONEER DDJ-SX].

8. Audio-related settings

Follow the instructions below to configure audio-related settings.

(1) Audio Setup

— For Windows PC Users

■ Audio Device : Pioneer DDJ-SX2 ASIO

— For Mac OS X Users

■ Audio Device : PIONEER DDJ-SX2

(2) Output Routing

■ Mixing Mode : Internal

■ Output Monitor :

— For Windows PC Users

L 3:DDJ-SX2 PHONES L

R 4:DDJ-SX2 PHONES R

— For Mac OS X Users

L 3:DDJ-SX2 PHONE L

R 4:DDJ-SX2 PHONE R

■ Output Master :

L 1: DDJ-SX2 MASTER L

R 2: DDJ-SX2 MASTER R

(3) Input Routing

■ Input FX Send (Ext) :

— For Windows PC Users

L 1: DDJ-SX2 AUX/MIC L

R 2: DDJ-SX2 AUX/MIC R

— For Mac OS X Users

L 1: DDJ-SX2 MASTER OUT L

R 2: DDJ-SX2 MASTER OUT R

Note: If you use a Windows PC, “AUX/MIC” is displayed for Input FX Send (Ext). However, “MASTER OUT” of the controller will be actually input.

(4) Mixer

■ Level : Check “Enable Autogain”.

■ Headroom : -6dB

Note: Please note that the audio quality is different from that of Serato DJ bundled with DDJ-SX2.

(5) Mix Recorder

■ Source : External

■ External Input : Input Fx Send (Ext)

9. Close TRAKTOR PRO 2 and turn off the power of DDJ-SX2. Then, after turning on the power of DDJ-SX2, reboot TRAKTOR PRO 2.

Now, all the settings are completed.

CAUTIONS

- Please follow the steps below when you launch DDJ-SX2 and TRAKTOR PRO 2.
- 2. If you launch them in reverse order, TRAKTOR PRO 2 may not be operated or no sound may be output from DDJ-SX2.

1. Turn on the power of DDJ-SX2.

2. Wait until the launch illumination is completed and all the [LOAD] buttons are lit.

3. Then, run the TRAKTOR PRO 2 software.

- If you have a problem that TRAKTOR PRO 2 cannot be operated or no sound is output from DDJ-SX2, please close TRAKTOR PRO 2 and turn off the power of DDJ-SX2. Then, after turning on the power of DDJ-SX2, restart TRAKTOR PRO 2 and check all the settings of [8. Audio-related settings] in this guide.

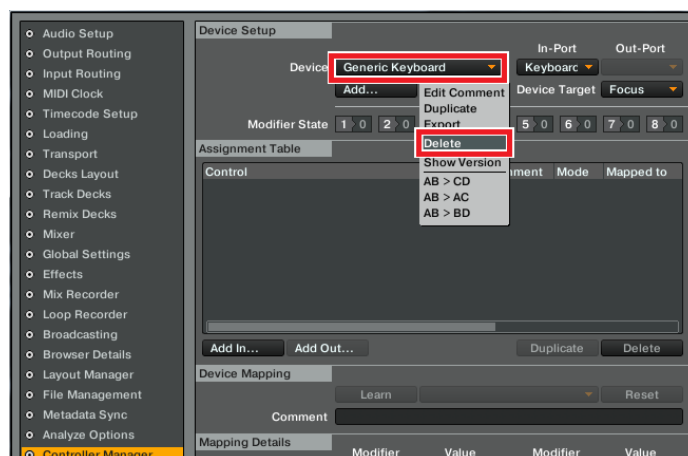
- Deck A/B supports Track Deck, and Deck C/D supports Track Deck and Mix Deck in this settings file. Other settings are not recommended.

Appendix: Deleting the settings file

1. Select [Controller Manager] from the [Preference] window.

2. Select the device to be deleted from [Device] and execute the [Delete] command from the [Edit...].

— When [YES] is selected; “None” is shown in the [Device].



About trademarks and registered Trademarks

- Pioneer is a registered trademark of PIONEER CORPORATION.
- TRAKTOR is a registered trademark of Native Instruments.
- Windows is either registered trademarks or trademarks of Microsoft Corporation in the United States and/or other countries.
- Mac OS is a trademark of Apple Inc., registered in the U.S. and other countries.
- The names of companies, products and technologies in this Guide are registered trademarks or trademarks of each company.

© 2014 PIONEER CORPORATION All rights reserved.

PIONEER CORPORATION

1-1, Shin-ogura, Saiwai-ku, Kawasaki-shi, Kanagawa 212-0031, Japan