

VIRTUALDJ

AUDIO & VIDEO MIXING
DJ SOFTWARE

Pioneer

DDJ-SP1



Table of Contents

A. INSTALLATION	3
Firmware & Drivers	3
VirtualDJ 8 Setup	3
Advanced Setup	4
B. EFFECTS	5
C. BROWSER	8
D. OTHER CONTROLS	9
E. PADS	10
Hot Cue mode	10
Hot Loop mode	11
Roll mode	11
Auto Loop mode	12
Slicer mode	12
Manual Loop mode	13
Sampler & Sampler Velocity mode	13

A. INSTALLATION

Firmware & Drivers

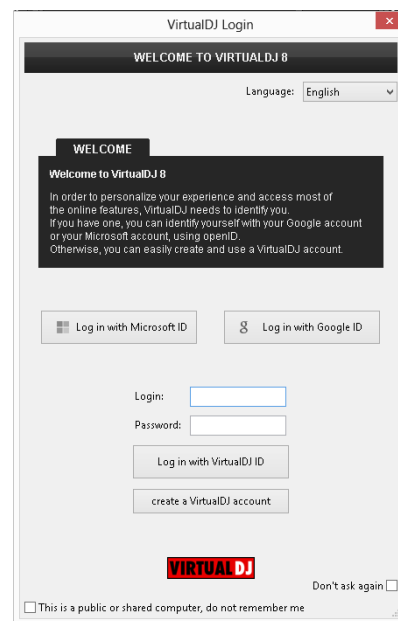
Firmware: Update the firmware of the unit to the latest version from <http://pioneerdj.com/support/product.php?c=3112&lang=en&p=DDJ-SP1&t=263>

Drivers: No drivers are required

VirtualDJ 8 Setup

Download and install VirtualDJ 8 from <http://www.virtualdj.com/download/index.html> (in case you have not done already)

Once VirtualDJ 8 is launched, a Login Window will appear. Login with your virtualdj.com account credentials. A **Pro Infinity** or a Pioneer DDJ-SP1 Controller **PLUS License** is required to fully use device. Without any of the above Licenses, the controller will operate for 10 minutes each time you restart VirtualDJ. <http://www.virtualdj.com/buy/index.html>



A **detection** window will appear next indicating that the controller is properly detected.



The unit is now **ready** to operate with VirtualDJ.

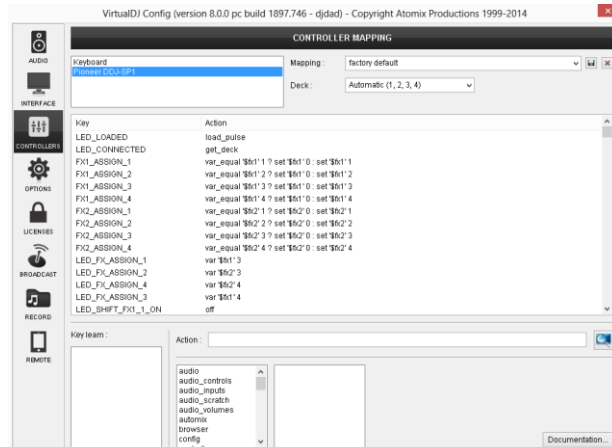
Advanced Setup

MIDI Operation

The unit should be visible in the CONTROLLERS tab of Config and the “factory default” available/selected from the Mappings drop-down list. The factory default Mapping offers the functions described in this document, however those can be adjusted to your needs via VDJ Script actions.

Find more details at

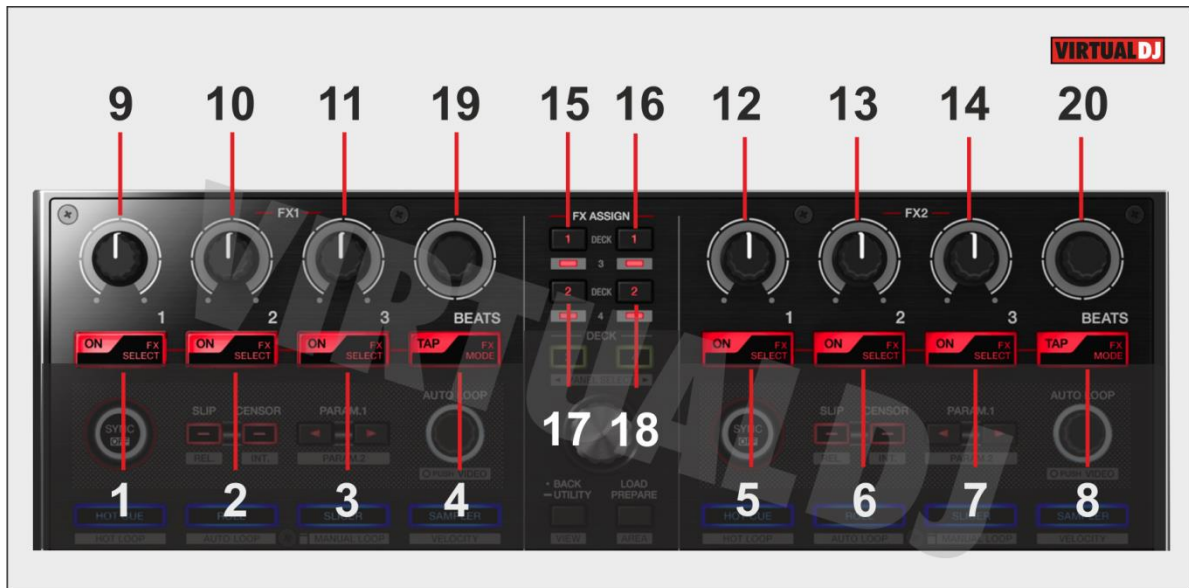
<http://www.virtualdj.com/wiki/VDJscript.htm>
!



For further software settings please refer to the User Guides of VirtualDJ 8.

<http://www.virtualdj.com/wiki/PDFManuals.html>

B. EFFECTS



The Effects section is offering 2 modes. The **Multi FX Mode** is offering 3 different effect slots for each one of the FX1 and FX2 units. The **Single FX Mode** is offering a single effect slot per side but more effect parameters.

FX1 unit Buttons (Left Side)

1. **FX ON 1:** In **Single FX mode**, press this button to enable/disable the selected effect. The effect is applying to deck 1, deck 2, deck 3, deck 4 or **left** deck, depending on the FX1 Assign buttons. Press SHIFT and then this button, to enable/disable the 1st effect button of the selected effect (if available).
In **Multi FX mode**, press this button to enable/disable the selected effect of the 1st effects slot. The effect is applying to deck 1, deck 2, deck 3, deck 4 or **left** deck, depending on the FX1 Assign buttons. Press SHIFT and then this button, to select the next available effect for slot 1.
2. **FX ON 2:** In **Single FX mode**, press this button to select the previous effect of the Effects list. Press SHIFT and then this button, to enable/disable the 2nd effect button of the selected effect (if available).
In **Multi FX mode**, press this button to enable/disable the selected effect of the 2nd effects slot. The effect is applying to deck 1, deck 2, deck 3, deck 4 or **left** deck, depending on the FX1 Assign buttons. Press SHIFT and then this button, to select the next available effect for slot 2.
3. **FX ON 3:** In **Single FX mode**, press this button to select the next effect of the Effects list. Press SHIFT and then this button, to enable/disable the 3rd effect button of the selected effect (if available).
In **Multi FX mode**, press this button to enable/disable the selected effect of the 3rd effects slot. The effect is applying to deck 1, deck 2, deck 3, deck 4 or **left** deck,

depending on the FX1 Assign buttons. Press SHIFT and then this button, to select the next available effect for slot 3.

4. **TAP/FXMULTI:** Press this button to manually tap the tempo of the song. The adjustment is applying to the **left** deck. Press SHIFT and then this button, to toggle between **Single and Multi FX mode**.

FX2 unit Buttons (Right Side)

5. **FX ON 1:** In **Single FX mode**, press this button to enable/disable the selected effect. The effect is applying to deck 1, deck 2, deck 3, deck 4 or **right** deck, depending on the FX2 Assign buttons. Press SHIFT and then this button, to enable/disable the 1st effect button of the selected effect (if available).
In **Multi FX mode**, press this button to enable/disable the selected effect of the 1st effects slot. The effect is applying to deck 1, deck 2, deck 3, deck 4 or **right** deck, depending on the FX2 Assign buttons. Press SHIFT and then this button, to select the next available effect for slot 1.
6. **FX ON 2:** In **Single FX mode**, press this button to select the previous effect of the Effects list. Press SHIFT and then this button, to enable/disable the 2nd effect button of the selected effect (if available).
In **Multi FX mode**, press this button to enable/disable the selected effect of the 2nd effects slot. The effect is applying to deck 1, deck 2, deck 3, deck 4 or **right** deck, depending on the FX2 Assign buttons. Press SHIFT and then this button, to select the next available effect for slot 2.
7. **FX ON 3:** In **Single FX mode**, press this button to select the next effect of the Effects list. Press SHIFT and then this button, to enable/disable the 3rd effect button of the selected effect (if available).
In **Multi FX mode**, press this button to enable/disable the selected effect of the 3rd effects slot. The effect is applying to deck 1, deck 2, deck 3, deck 4 or **right** deck, depending on the FX2 Assign buttons. Press SHIFT and then this button, to select the next available effect for slot 3.
8. **TAP/FXMULTI:** Press this button to manually tap the tempo of the song. The adjustment is applying to the **right** deck. Press SHIFT and then this button, to toggle between **Single and Multi FX mode**.

FX1 unit Knobs (Left Side)

9. **FX Knob 1:** In **Single FX mode**, the knob controls the 1st effect parameter of the selected effect. Hold SHIFT down and then use this knob to control the 4th effect parameter of the selected effect (if available). The adjustment is applying to deck 1, deck 2, deck 3, deck 4 or **left** deck, depending on the FX1 Assign buttons.
In **Multi FX mode**, the knob controls the 1st effect parameter of the selected effect of slot 1. Hold SHIFT and then use this knob to control the 2nd effect parameter of the selected effect of slot 1. The adjustment is applying to deck 1, deck 2, deck 3, deck 4 or **left** deck, depending on the FX1 Assign buttons.
10. **FX Knob 2:** In **Single FX mode**, the knob controls the 2nd effect parameter of the selected effect. Hold SHIFT down and then use this knob to control the 5th effect parameter of the selected effect (if available). The adjustment is applying to deck 1, deck 2, deck 3, deck 4 or **left** deck, depending on the FX1 Assign buttons.

In **Multi FX mode**, the knob controls the 1st effect parameter of the selected effect of slot 2. Hold SHIFT down and then use this knob to control the 2nd effect parameter of the selected effect of slot 2. The adjustment is applying to deck 1, deck 2, deck 3, deck 4 or **left** deck, depending on the FX1 Assign buttons.

11. FX Knob 3: In **Single FX mode**, the knob controls the 3rd effect parameter of the selected effect. Hold SHIFT down and then use this knob to control the 6th effect parameter of the selected effect (if available). The adjustment is applying to deck 1, deck 2, deck 3, deck 4 or **left** deck, depending on the FX1 Assign buttons.

In **Multi FX mode**, the knob controls the 1st effect parameter of the selected effect of slot 3. Hold SHIFT down and then use this knob to control the 2nd effect parameter of the selected effect of slot 3. The adjustment is applying to deck 1, deck 2, deck 3, deck 4 or **left** deck, depending on the FX1 Assign buttons.

FX2 unit knobs (Right Side)

12. FX Knob 1: In **Single FX mode**, the knob controls the 1st effect parameter of the selected effect. Hold SHIFT down and then use this knob to control the 4th effect parameter of the selected effect (if available). The adjustment is applying to deck 1, deck 2, deck 3, deck 4 or **right** deck, depending on the FX2 Assign buttons.

In **Multi FX mode**, the knob controls the 1st effect parameter of the selected effect of slot 1. Hold SHIFT and then use this knob to control the 2nd effect parameter of the selected effect of slot 1. The adjustment is applying to deck 1, deck 2, deck 3, deck 4 or **right** deck, depending on the FX2 Assign buttons.

13. FX Knob 2: In **Single FX mode**, the knob controls the 2nd effect parameter of the selected effect. Hold SHIFT down and then use this knob to control the 5th effect parameter of the selected effect (if available). The adjustment is applying to deck 1, deck 2, deck 3, deck 4 or **right** deck, depending on the FX2 Assign buttons.

In **Multi FX mode**, the knob controls the 1st effect parameter of the selected effect of slot 2. Hold SHIFT down and then use this knob to control the 2nd effect parameter of the selected effect of slot 2. The adjustment is applying to deck 1, deck 2, deck 3, deck 4 or **right** deck, depending on the FX2 Assign buttons.

14. FX Knob 3: In **Single FX mode**, the knob controls the 3rd effect parameter of the selected effect. Hold SHIFT down and then use this knob to control the 6th effect parameter of the selected effect (if available). The adjustment is applying to deck 1, deck 2, deck 3, deck 4 or **right** deck, depending on the FX2 Assign buttons.

In **Multi FX mode**, the knob controls the 1st effect parameter of the selected effect of slot 3. Hold SHIFT down and then use this knob to control the 2nd effect parameter of the selected effect of slot 3. The adjustment is applying to deck 1, deck 2, deck 3, deck 4 or **right** deck, depending on the FX2 Assign buttons.

15. FX1 Assign 1/3: Press this button to assign FX1 unit to deck 1. Press SHIFT and then this button to assign FX1 unit to deck 3.

16. FX2 Assign 1/3: Press this button to assign FX2 unit side to deck 1. Press SHIFT and then this button to assign FX2 unit side to deck 3.

17. FX1 Assign 2/4: Press this button to assign FX1 unit to deck 2. Press SHIFT and then this button to assign FX unit to deck 4.

18. FX2 Assign 2/4: Press this button to assign FX2 unit to deck 2. Press SHIFT and then this button to assign FX2 unit to deck 4.

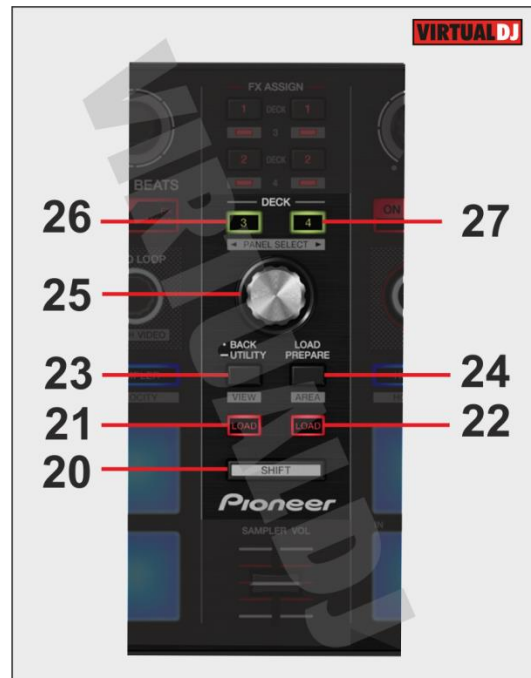
Notes:

*If none of the FX1 Assign buttons are selected, the FX1 unit will apply to the left deck.
If none of the FX2 Assign buttons are selected, the FX2 unit will apply to the right deck.*

- 19. & 20. BEATS ENCODER/PUSH:** Moves the track of the left or right deck forward/backwards by **1 beat per step**. Push the Encoder to enable the **Fine Adjust mode** (global mode for both sides). If the Fine Adjust mode is enabled, the steps become 20 times more accurate (move by 1/20 beat). Hold SHIFT and then move the encoder to **adjust the width of the Beatgrid**, which is equal to BPM/tempo adjustment by **1 beat per minute**. If the Fine Adjust mode is enabled the adjustment becomes **0.1 beats per minute**. Hold SHIFT and then push the Encoder to **set a Beatgrid Anchor** (first beat) to the current position.

C. BROWSER

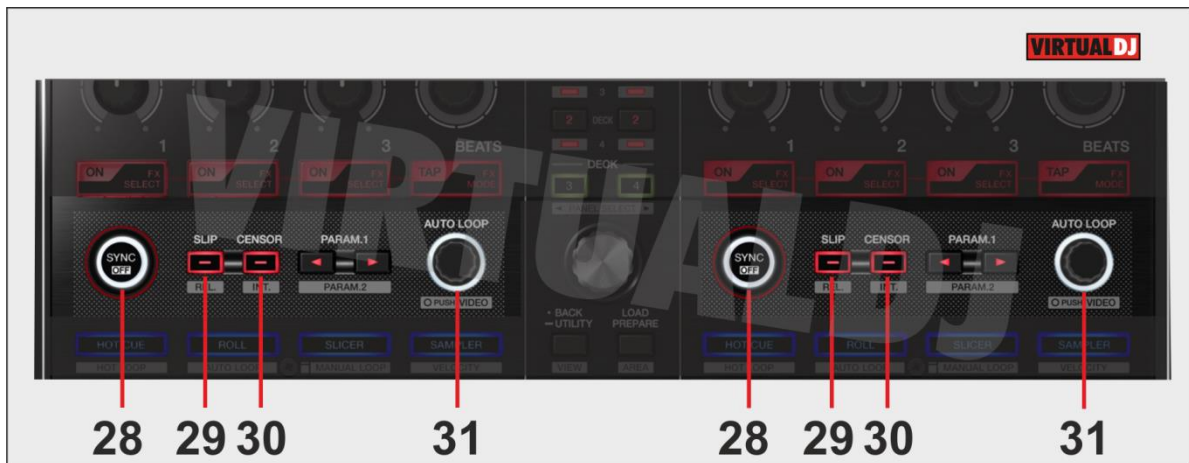
- 20. SHIFT:** Offers additional functions to the buttons and knobs.
- 21. LOAD:** Press this button to load the selected song to **left** deck. Hold SHIFT and then press this button to unload the left deck
- 22. LOAD:** Press this button to load the selected song to **right** deck. Hold SHIFT and then press this button to unload the right deck
- 23. BACK:** Cycles focus through the available Browser Lists (Folders, Songs, Sideview). Hold SHIFT and then press this button to show/hide the SideView.



- 24. LOAD/PREPARE:** Press this button to **load the focused track** of the Songs List to the **Automix** List of Sideview. Hold SHIFT and then press this button to cycle through the available windows of Sideview (Automix, Sidelist, Sampler, Karaoke, and Clone).
- 25. BROWSE ENCODER:** Scrolls through tracks or folders. If focus is on the Folders list, push the encoder to enter to the Songs list. If focus is on the Songs list or SideView, push the encoder to load the selected track to the Prelisten Player. Hold SHIFT and then push the encoder to open/close subfolders. Hold SHIFT and then use the encoder to control the Prelisten Player position.

- 26. **DECK1/3:** Set deck 1 or deck 3 as left deck. The left side of the DDJ-SP1 will control the corresponding deck.
- 27. **DECK2/4:** Set deck 2 or deck 4 as right deck. The right side of the DDJ-SP1 will control the corresponding deck.

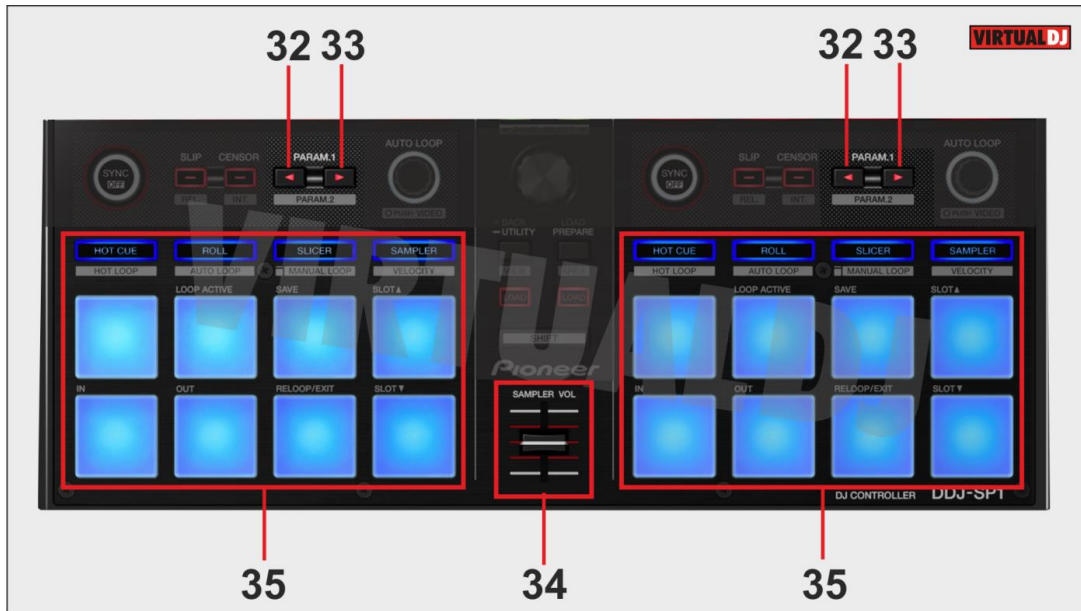
D. OTHER CONTROLS



- 28. **SYNC:** Synchronize the deck with the Master Deck (when only 2 Decks are used the deck syncs with the opposite deck). Hold SHIFT and then press this button to set the deck as Master Deck. All other decks will sync to the Master Deck.
- 29. **SLIP:** Press this button to enable the SLIP Mode on the selected deck.
- 30. **CENSOR:** Press and hold this button to play the deck in reverse. When the button is released the song will return to the position it would have been if the button was never pressed.
- 31. **LOOP ENC/PUSH:** Halves/doubles the size of the loop when turned anti-clockwise/clockwise. Push the Encoder to enable/disable the selected loop size. Hold SHIFT and turn the Encoder anti-clockwise/clockwise to move the loop backward/forward. If Pads are in Sampler mode (see [PADS](#)), the encoder halves/doubles the size of the Sampler Loop.

E. PADS

Pads (35) offer **8 different modes**, depending on the PAD MODE buttons. Each of the 4 PAD MODE buttons offers 2 individual modes (hold SHIFT and then press the PAD MODE button to access the additional mode).



Hot Cue mode

Press the **HOT CUE** mode button to set the PADS to **Hot Cue** mode.

Each one of the 8 pad assigns a Hot Cue Point or jumps the track to that Hot Cue Point (if assigned).

When a Hot Cue Button is unlit, you can assign a Hot Cue Point by pressing it at the desired point in your track. Once it is assigned, the Hot Cue Button will be lit.

Hold **SHIFT** and then press a pad to **delete** its assigned Hot Cue Point. Leds will blink if a HotCue point exists.



The PARAMETER buttons (32/33) jump the song to the previous/next assigned HotCue point. Hold SHIFT and then press the PARAMETER buttons to select between the **Normal (32)** and the **Stutter (33)** HotCue mode. On Stutter mode, when the track is paused, the HotCues act temporary (preview the track while pressed).

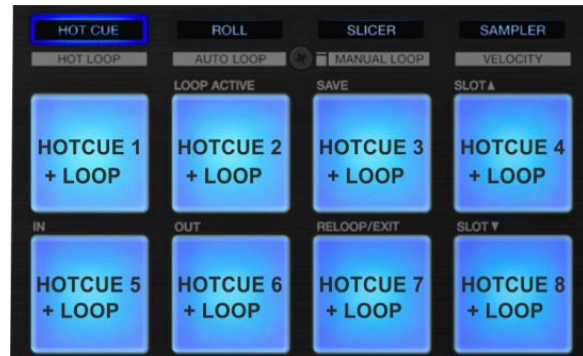
Hot Loop mode

Hold **SHIFT** and then press the **HOT CUE** mode button to set the PADS to **Hot Loop** mode. The led of the HOT CUE button will blink to indicate this mode.

In this mode each one of the 8 pads assigns a Hot Cue Point or returns the track to that Hot Cue Point, but in both cases, it also triggers a **Loop** at that point, while the Pad is pressed.

Hold **SHIFT** and then press a pad to **delete** its assigned Hot Cue Point. Leds will blink if a HotCue point exists.

The length of the Loop can be adjusted by the LOOP ENCODER (31).



The PARAMETER buttons (**32/33**) jump the song to the previous/next assigned HotCue point.

Roll mode

Press the **ROLL** mode button to set the PADS to **Roll mode**. This mode offers 2 different Loop Roll functions.

Roll FX mode: Press one of the 8 pad to trigger a momentary **Loop Roll FX**. The Loop Roll FX is not affecting the video output, and the waveform of the track on the VirtualDJ GUI will continue to indicate the exit point. The size of the Loop Roll varies (see image).

Loop Roll mode: Press **SHIFT** and then one of the 8 pads to trigger a momentary **Loop Roll action**. The Loop Roll actions affect the Video output and the waveform of the track on the GUI will remain to the loop position. The size of the Loop Roll varies (see image).

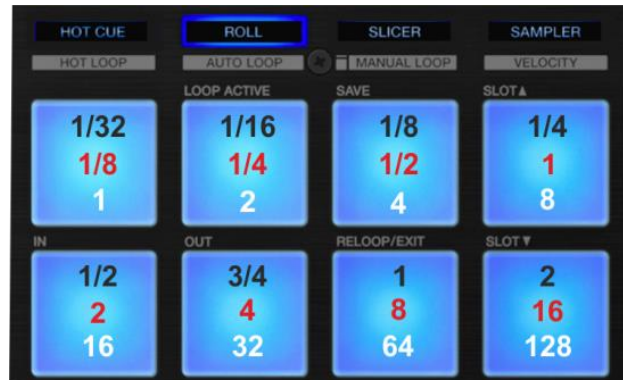


Auto Loop mode

Hold **SHIFT** and then press the **ROLL** mode button to set the PADs to **Auto Loop mode**. The led of the ROLL button will blink to indicate this mode.

Press one of the pads to trigger a momentary **Loop** (while pressed) of a different size (see image). Hold **SHIFT** and then press one of the pads to trigger a **toggle Loop** (on/off)

3 Loop Size banks are offered (**Small**, **Normal** and **Large**), selected by the **PARAMETER (32 & 33)** buttons.



Press the **PARAMETER (32)** button to select the Small loop size bank (loops 1/32 to 2 beats). The led of this button will lit to indicate this loop bank. Press the **PARAMETER (33)** button to select the Large Loop size bank (loops 1 to 128 beats). The led of this button will lit to indicate this loop bank.

Use the same buttons to return to the Normal loop bank (loops 1/8 to 16 beats). When none of the Leds are list, the Normal size loop bank is selected.

Slicer mode

Press the **SLICER** mode button to set the PADs to **SLICER mode**.

The eight pads represent eight sequential beats—"Slices"—in the Beat Grid. The currently playing Slice is represented by the currently lit pad. The lit led will "move through the pads" as it progresses through each eight-Slice phrase. Press a pad to repeat that Slice (hold it down if you want to keep looping it).

Once the Pad is released the track will continue to play from the position it would have been if the pad was never pressed.



If **SHIFT** is pressed the Pads act in **SLICER HOLD mode**. In this mode the Slice is memorized on first press as the track continues to play.

Use the **PARAMETER (32 & 33)** buttons to adjust the **length of the Loop** applied to the slice. Press **SHIFT** and then the **PARAMETER (32 & 33)** buttons to adjust the **step of the Slices**

Manual Loop mode

Hold **SHIFT** and then press the **SLICER** button to set the PADs to **Manual Loop mode**.

Each pad represents a manual Loop software function (see image).

Press Pad 1 to toggle **Smart Loop**. If Smart Loop is enabled, VirtualDJ will automatically adjust the loop to the nearest loop size (for seamless loop) if Loop In and Loop Out are used. Hold SHIFT and then use the same pad to toggle **Loop Back** mode.

Use Pads 5 & 6 to set a **Loop In** and **Loop Out** point (manual looping).



Press Pad 7 to enable the last triggered loop (**reloop**)

Use Pad 3 to **save** the current loop to a slot. Press SHIFT and then the same pad to **delete** the saved loop. Press Pad 2 to **load and prepare** the saved loop. Press SHIFT and then the same pad to **load** the saved loop and jump to the saved Loop position.

Sampler & Sampler Velocity mode

Press the **SAMPLER** button to set the PADs to **Sampler mode**.

Each one of the pads triggers a sample from the selected Sampler Bank of VirtualDJ. If a bank has less than 9 samples, both sides of the DDJ-SP1 will control the same samples. If a bank has more than 8 samples, the left side of the DDJ-SP1 will control samples 1 to 8 and the right side samples 9 to 16. The PAD will be lit if a sample slot is loaded and will blink if triggered.



Press any of the pads to **trigger a sample**. Depending on the selected **trigger Pad mode**, hold **SHIFT** and then press the same pad to **stop the sample**.

Use the PARAMETER (**32/33**) buttons to select the **Sampler Bank** (previous/next). Press SHIFT and then the PARAMETER (**32/33**) buttons to select the previous/next **Trigger Pad mode** (on/off, hold, stutter, unmute)

Use the **SAMPLER VOL (35)** fader to adjust the **Master Volume** of the **Sampler** Output.

Hold **SHIFT** and then press the **SAMPLER** Pad mode button to set the PADS to **Sampler Velocity mode**. The Led of the **SAMPLER** mode button will blink to indicate this mode. In this mode the Pads will additionally alter the Volume of the triggered Sample depending on the pressure (velocity).

Hardware Integration Department



2014 - ATOMIX PRODUCTIONS

Reproduction of this manual in full or in part without written permission from Atomix Productions is prohibited.