

*Pioneer*

**DJ SYSTEM**

**XDJ-RX**

<http://pioneerdj.com/support/>

The Pioneer DJ support site shown above offers FAQs, information on software and various other types of information and services to allow you to use your product in greater comfort.

**"TRAKTOR PRO 2"**

Settings File Import Guide

## Before start –Important–

Pioneer provides a settings file exclusively for use with the Native Instruments “TRAKTOR PRO 2” DJ software. TRAKTOR PRO 2 can be controlled from this unit by importing this file.

- A computer on which TRAKTOR PRO 2 is installed is required.
- Windows/Mac users need an exclusive ASIO driver. Please follow the Operating Instructions of XDJ-RX to install the ASIO driver software included with XDJ-RX in advance.

### Notice:

- Pioneer will accept no responsibility whatsoever for damages resulting from downloading or installing this settings file. Operation of this settings file is not guaranteed.
- Users should take full responsibility for downloading, installing and using this settings file.
- The specifications of this settings file are subject to change without notice.
- Please note that services regarding this settings file may be terminated without notice.

### Disclaimer:

Please note that Pioneer will accept no responsibility whatsoever for loss or damage to the customer's computer caused by the operations based on the information in this Guide. It is advised to use this information at your own risk and on your own responsibility.

## Setting of XDJ-RX

### 1. Set the [MIXER MODE] of XDJ-RX

- 1) Press the [MENU] button on XDJ-RX more than 1 second to open the [UTILITY] screen.
- 2) Turn the rotary selector and select [MIXER MODE], then press the rotary selector.
- 3) • When mixing the sound using the Mixer section of XDJ-RX:  
—Turn the rotary selector to select [XDJ-RX], then press the rotary selector.  
• When mixing the sound within TRAKTOR PRO 2:  
—Turn the rotary selector to select [MIDI CONTROL], then press the rotary selector.

- 4) Press the [MENU] button to close the [UTILITY] screen.

### 2. Switch XDJ-RX to Control mode

- 1) Connect XDJ-RX and a computer using the USB cable.
- 2) Press the [MIDI] button on XDJ-RX.
- 3) Press the [LOAD] button of CH1 and CH2.
- 4) Set [DECK⇄PHONO/LINE] to [DECK] of CH1 and CH2.

## Backing up the current settings file

We recommend backing up using the procedure below so that the current settings can be restored if necessary.

— This operation is not necessary for those using TRAKTOR PRO 2 for the first time.

1. Select  (Preference) in the upper right of the screen.

2. On the [Preferences] window, click [Export].

3. Check the items to be backed up, then click [OK].  
Give the file an easily identifiable name (e.g.: BackUp.tsi) and save it in the desired location.



## Importing a settings file

**Note:** When another settings file has been imported before, this procedure may not operate properly. In this case, delete the imported settings file before performing this operation. For details, see “Deleting the settings file” on page 2.

### 1. Save the settings file.

Unzip the downloaded file and save it below location depend on your computer.

— For Windows PC Users

My Documents¥Native Instruments¥Traktor 2.x.x¥Settings

— For Mac OS X Users

Documents/Native Instruments/Traktor 2.x.x/Settings

### 2. Launch TRAKTOR PRO 2.

3. Select  (Preference) in the upper right of the screen.

4. Click [Import] on the [Preferences] window.

Select the “PIONEER\_XDJ-RX\_Vxxx.tsi” file saved in step 1.

5. Click [OK] to load the settings file.

Tick the checkbox of [Controller Mappings], [GUI Layout], [Effect Settings] and [Other Preferences And Settings] and press [OK].



**Note:** Depending on the computer you use, it may take time to read the settings file or the reaction of the [Preferences] window may **get slow**. However, such behaviors would not cause any problem of the application itself.

## 6. Device settings

Follow the instructions below to configure audio-related settings.

### ■ Device :

#### — For Windows PC Users

PIONEER XDJ-RX – Generic MIDI (PIONEER XDJ-RX MIDI, n/a)

#### — For Mac OS X Users

PIONEER XDJ-RX – Generic MIDI (n/a)

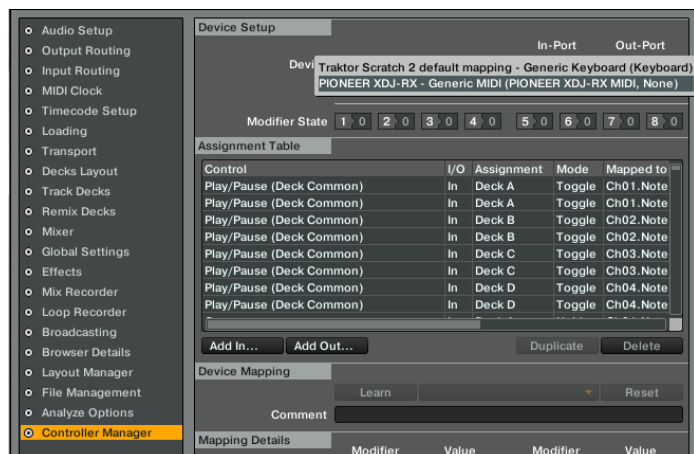
### ■ In-Port

#### — For Windows PC Users

PIONEER XDJ-RX MIDI

#### — For Mac OS X Users

PIONEER XDJ-RX(PIONEER XDJ-RX)



## 7. Audio-related settings

Follow the instructions below to configure audio-related settings.

### (1) Audio Setup

#### — For Windows PC Users

■ Audio Device : Pioneer XDJ\_RX ASIO

#### — For Mac OS X Users

■ Audio Device : PIONEER XDJ-RX(CoreAudio)

### (2) Output Routing

● When mixing the sound using the Mixer section of XDJ-RX

■ Mixing Mode : External

■ Output Deck A :

— For Windows PC Users

L - 1: PIONEER XDJ-RX OUT 1

R - 2: PIONEER XDJ-RX OUT 2

— For Mac OS X Users

L - 1: PIONEER XDJ-RX Out 0

R - 2: PIONEER XDJ-RX Out 1

■ Output Deck B :

— For Windows PC Users

L - 3: PIONEER XDJ-RX OUT 3

R - 4: PIONEER XDJ-RX OUT 4

— For Mac OS X Users

L - 2: PIONEER XDJ-RX Out 2

R - 3: PIONEER XDJ-RX Out 3

● When mixing the sound within TRAKTOR PRO 2

■ Mixing Mode : Internal

■ Output Monitor :

— For Windows PC Users

L - 3: PIONEER XDJ-RX OUT 3

R - 4: PIONEER XDJ-RX OUT 4

— For Mac OS X Users

L - 3: PIONEER XDJ-RX Out 2

R - 4: PIONEER XDJ-RX Out 3

■ Output Master :

— For Windows PC Users

L - 1: PIONEER XDJ-RX OUT 1

R - 2: PIONEER XDJ-RX OUT 2

— For Mac OS X Users

L - 1: PIONEER XDJ-RX Out 0

R - 2: PIONEER XDJ-RX Out 1

## 8. Reboot TRAKTOR PRO 2.

Now, all the settings are completed.

### CAUTIONS

■ If you have a problem that TRAKTOR PRO 2 cannot be operated or no sound is output from XDJ-RX, please close TRAKTOR PRO 2 and turn off the power of XDJ-RX. Then, after turning on the power of XDJ-RX, restart TRAKTOR PRO 2 and check all the settings of [7. Device settings] and [8. Audio-related settings] in this guide.

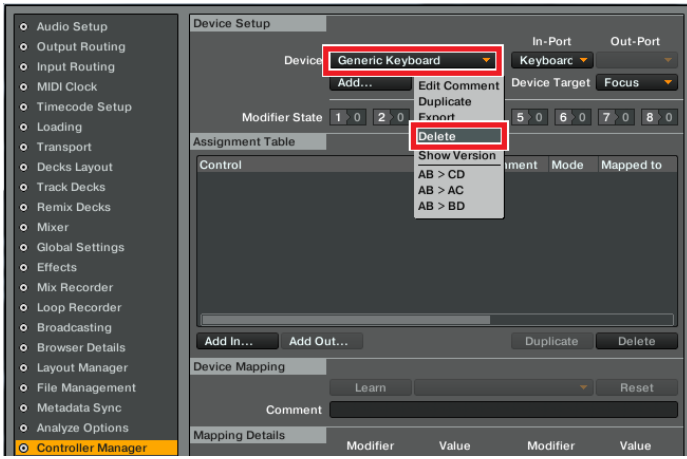
■ Deck A/B supports Track Deck, and Deck C/D supports Track Deck and Mix Deck in this settings file. Other settings are not recommended.

## Appendix: Deleting the settings file

1. Select [Controller Manager] from the [Preference] window.

2. Select the device to be deleted from [Device] and execute the [Delete] command from the [Edit...].

— When [YES] is selected; "None" is shown in the [Device].



## About trademarks and registered Trademarks

- Pioneer is a registered trademark of PIONEER CORPORATION.
- TRAKTOR is a registered trademark of Native Instruments.
- Windows is either registered trademarks or trademarks of Microsoft Corporation in the United States and/or other countries.
- Mac OS is a trademark of Apple Inc., registered in the U.S. and other countries.
- The names of companies, products and technologies in this Guide are registered trademarks or trademarks of each company.

© 2014 PIONEER CORPORATION All rights reserved.

**PIONEER CORPORATION**

1-1, Shin-ogura, Saiwai-ku, Kawasaki-shi, Kanagawa 212-0031, Japan