

Pioneer

DJ MIXER

DJM-T1

“TRAKTOR 2” Version 2.6

Setup Guide

Before Start

The new functions added to TRAKTOR 2.6 became available using with DJM-T1 if the firmware of DJM-T1 is updated to version 3.00 or later and the settings file 1.02 or later is imported to TRAKTOR2.

The following new functions of TRAKTOR became available when the firmware is updated:

- FLUX mode
- Post Fader set in the FX Unit Routing

Requirements to control the new functions using with DJM-T1:

- DJM-T1 firmware version 3.00 or later
- Settings file version 1.02 or later imported to TRAKTOR

First, update the firmware of DJM-T1 to version 3.00 or later.

Please refer to the update guide for further details.

Next, import the settings file version 1.02 or later to TRAKTOR 2.

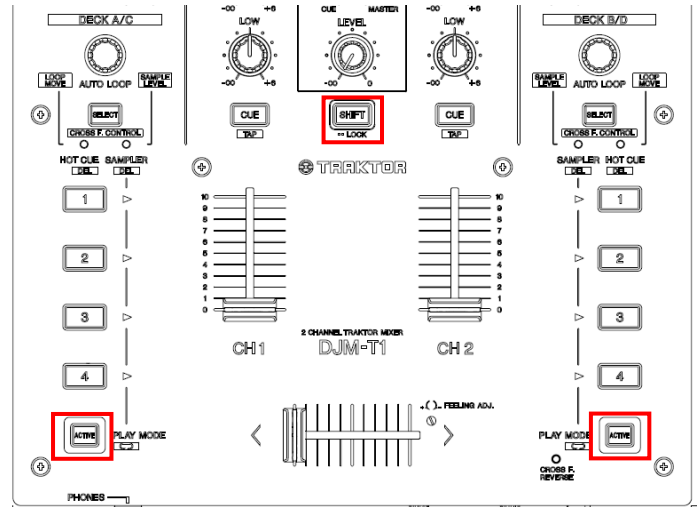
Please refer to the Import Guide for the further details.

The Update Guide and the Import Guide are available on our support site:

(<http://pioneerdj.com/support/>)

Each time the above procedures are performed, the FLUX mode on TRAKTOR is toggled on and off. The status of the FLUX mode is shown on DJM-T1.

- **When “FLUX mode” is on: The ACTIVE button is lit when the SHIFT button is pressed.**
- **When “FLUX mode” is off: The ACTIVE button is not lit even when the SHIFT button is pressed.**



5. Press the HOT CUE button while the FLUX mode is activated.

The playback from the HOT CUE point continues while the HOT CUE button is held down and “Flux Mode” is displayed on the deck of the TRAKTOR GUI.

When your hand is released from the button, normal playback resumes from the point reached while the Flux mode was activated.

1. How to use the Flux mode

The newly added “FLUX mode” to TRAKTOR ver. 2.6 can be controlled by DJM-T1. By using the buttons on DJM-T1, the FLUX mode is activated and deactivated and by pressing the HOT CUE buttons, the current playing position instantly jumps to a HOT CUE position.

1. Press the [LOAD A] button or the [LOAD B] button on DJM-T1.

A track is loaded to Deck A or Deck B on TRAKTOR.

2. Press the [▶/■] button on Deck A or Deck B on DJM-T1.

The track on the deck starts playing.

3. Press the [SELECT] button on DJM-T1 to select “HOT CUE” mode and press the [HOT CUE] button.

A HOT CUE point is set.

4. Press the [ACTIVE] button while pressing the [SHIFT] button on DJM-T1.

Press the ACTIVE button on the deck where FLUX mode is to be used.

2. How to set and use the Post Fader

“Post Fader” is newly added to the FX Unit Routing settings on TRAKTOR ver. 2.6.

When DDJ-T1 is set to the Internal mode and “Post Fader” is selected on TRAKTOR, the effect sound can be kept going even after pulling the CH fader on DJM-T1 down to zero.

Internal mode:

The mode to control TRAKTOR to mix the sound in TRAKTOR

External mode (Usual mode):

The mode to mix the sound in DJM-T1

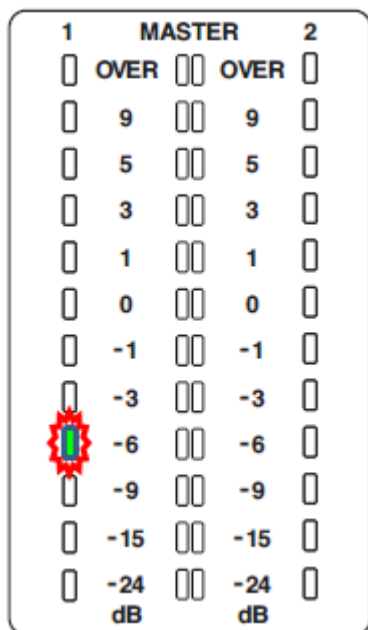
2-1. How to set the Post Fader

Setting DJM-T1 to the Internal mode

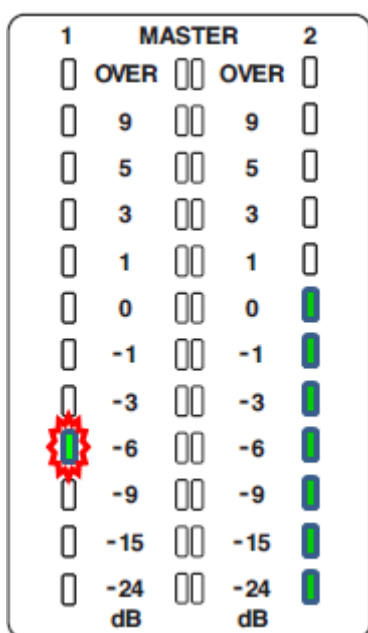
1. Press the [UTILITY] button on DJM-T1 for longer than 1 second.

2. Press the [LOAD B] button on DJM-T1 for several times to flash the LED beside -6dB on CH1.

Please refer to the Operating Instructions for how to display and change utility settings.



3. Turn the rotary selector clockwise.



4. Ensure that seven LEDs on the CH2 are lit.

DJM-T1 is set to the Internal mode.

5. Press the rotary selector to save the setting.

The LED of the UTILITY button flashes rapidly while saving the setting.

If exiting the UTILITY mode without pressing the rotary selector, the settings are not saved and the status before entering the UTILITY mode is restored.

6. Press the [UTILITY] button.

The LED of the UTILITY button stops flashing when exiting the UTILITY mode.

[Note] While DJM-T1 is set to the Internal mode, the CH1 and CH2 buttons are disabled for activation and deactivation of MIDI functions even if they are pressed. When either of the buttons is pressed, the LED flashes rapidly.

· When TRAKTOR is launched while DJM-T1 is set to the Internal mode, the physical positions of the controls on DJM-T1 and TRAKTOR may be different. In such cases, please move the buttons and knobs on DJM-T1 to align their positions with those on the GUI of TRAKTOR.

· When DJM-T1 is set to the External mode, ensure that the MIDI function is deactivated.

[Returning from Internal mode back to External (usual) mode]

* When using DJM-T1 in the Internal mode, skip this section and go to [Setting TRAKTOR to the Internal mode] on page 3.

1. Turn the rotary selector counterclockwise in the step 3 of the previous section and ensure that no LED of CH2 is lit.

DJM-T1 is set to the External (usual) mode.

2. Press the rotary selector to save the setting.

The LED of the UTILITY button flashes rapidly while saving the setting.

3. Press the [UTILITY] button

The LED of the UTILITY button stops flashing when exiting the UTILITY mode.

[Note] When DJM-T1 is set to the External mode, be sure to change the [Output Routing] of TRAKTOR to External. Unless it is changed to External, the audio from TRAKTOR cannot be properly mixed on DJM-T1.

Setting TRAKTOR to the Internal mode

1. Select [Output Routing] from the [Preferences] window.
2. Select [Internal] and set [Output Monitor] and [Output

Master] as follows:

- Windows

Output Monitor

Lch PIONEER DJM-T1 OUT 1
Rch PIONEER DJM-T1 OUT 2

Output Master

Lch PIONEER DJM-T1 OUT 5
Rch PIONEER DJM-T1 OUT 6

* Leave OUT 3 and OUT 4 blank.

- Mac OS X

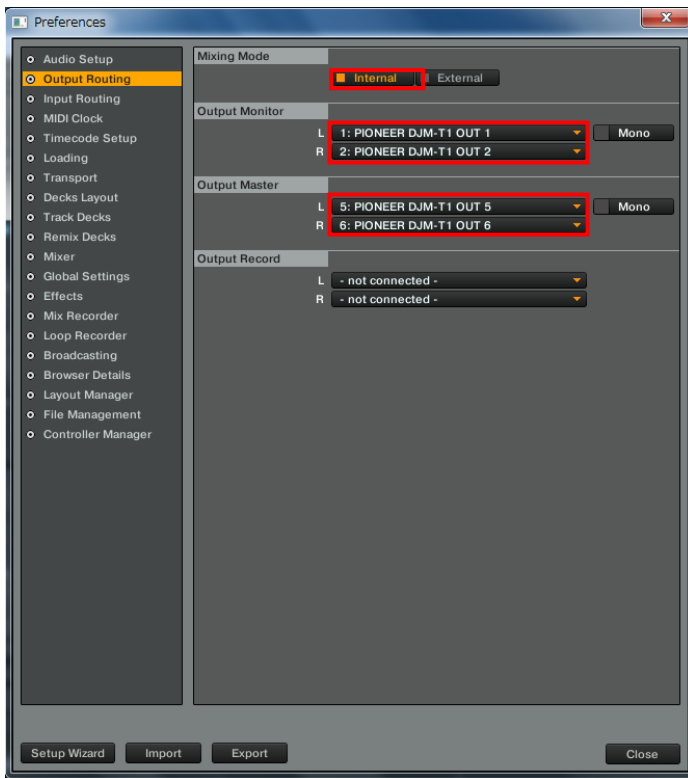
Output Monitor

Lch PIONEER DJM-T1 OUT 0
Rch PIONEER DJM-T1 OUT 1

Output Master

Lch PIONEER DJM-T1 OUT 4
Rch PIONEER DJM-T1 OUT 5

* Leave OUT 2 and OUT 3 blank.



Changing FX Unit Routing on TRAKTOR

1. Press the [SHIFT] button twice rapidly.

The [SHIFT] button is locked in the pressed status and the LED of [SHIFT] is lit.

2. Press the [SHIFT] button once again while the [SHIFT] button is locked.

The SHIFT button flashes rapidly. (ADVANCED SHIFT mode)

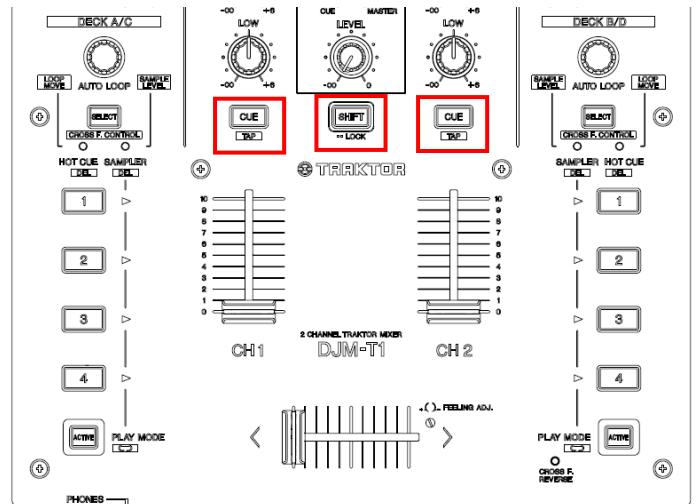
3. Press the [HEADPHONE CUE CH1] or [HEADPHONE CUE CH2] button while pressing the [SHIFT] button.

FX Unit Routing of TRAKTOR is changed.

The status of FX Unit Routing is shown by whether the HEADPHONE CUE button is lit or not in the ADVANCED SHIFT mode.

When the LED is lit: Insert

When the LED is not lit: Post Fader



When using the unit in the Internal mode, [FX Unit Routing] is set to "Insert", but if "Post Fader" is selected, the effect sound is kept going even after pulling the CH fader on DJM-T1 down to zero.

[Change of the assignment of the ZOOM function]

The above procedure is assigned to the [ZOOM] function in the settings file 1.01, but other procedure is assigned to the [ZOOM] function in this version of the settings file.

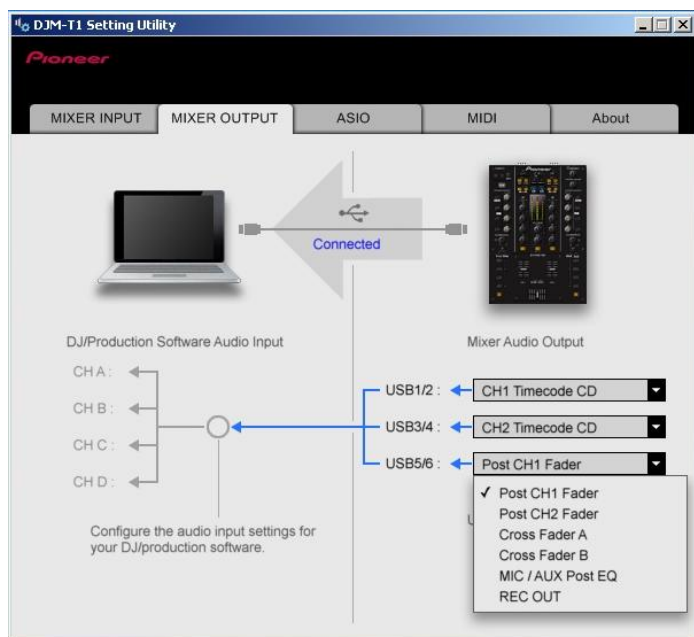
(How to activate the ZOOM function)

Press the SELECT button on Deck A or Deck B in the ADVANCED SHIFT mode.

Setting UTILITY in the Internal mode

Depending on the status of the input selector switch, the settings selected in the Setting Utility on the computer GUI may not be effective.

Settings of [MIXER OUTPUT] USB 5/6



2-2. How to use Post Fader

When DDJ-T1 is set to the Internal mode and "Post Fader" is selected in [Output Routing] on TRAKTOR, the effect sound can be kept going even after pulling the CH fader on DJM-T1 down to zero.

When the input selector switch on DJM-T1 is set to [USB], TRAKTOR can be controlled by using the following controls.

(Controls)

- TRIM control on each channel
- ISO knob on each channel
- Headphone CUE button on each channel
- CH fader on each channel
- Crossfader

The controls on CH1 are assigned to TRAKTOR's DECK A and those on CH2 are to DECK B. When the input select switch is set to other than [USB], TRAKTOR cannot be controlled by the above controls.

[Note] When Autogain is enabled on TRAKTOR (when the button on the lower right of the GAIN knob is lit in orange), the TRIM knob cannot control TRAKTOR.

Post CH1 Fader

		CH2		
		CD	PHONO	USB
C H 1	CD	○	○	○
	PHONO	○	○	○
	USB	×	×	×

Post CH2 Fader

		CH2		
		CD	PHONO	USB
C H 1	CD	○	○	×
	PHONO	○	○	×
	USB	○	○	×

Cross Fader A

		CH2		
		CD	PHONO	USB
C H 1	CD	○	○	○
	PHONO	○	○	○
	USB	×	×	×

Cross Fader B

		CH2		
		CD	PHONO	USB
C H 1	CD	○	○	×
	PHONO	○	○	×
	USB	○	○	×

MIC/AUX Post EQ

		CH2		
		CD	PHONO	USB
C H 1	CD	○	○	○
	PHONO	○	○	○
	USB	○	○	○

REC OUT

		CH2		
		CD	PHONO	USB
C H 1	CD	○	○	○
	PHONO	○	○	○
	USB	○	○	○

Please select only the combinations with ○ in the above list.

If the combinations with X are selected, sound is not properly output.

Adjust MASTER volume level

1. Turn the MASTER knob on DJM-T1

When the mixed audio in TRAKTOR is output from DJM-T1, the MASTER output level can be adjusted on DJM-T1.

* This knob does not control TRAKTOR.

[Note] When the MASTER volume level is adjusted on DJM-T1, ensure that the MAIN knob on the TRAKTOR GUI is at the default position, the position automatically set at when double-clicking the knob.

Adjust the BOOTH volume level

1. Turn the BOOTH knob on DJM-T1

When the mixed sound in TRAKTOR is output from DJM-T1, the BOOTH output level can be adjusted on DJM-T1.

* This knob does not control TRAKTOR.

Monitoring the sound with a headphone

1. Turn the [HEADPHONES MIXING] knob on DJM-T1 to the direction of [CUE].

* This knob does not control TRAKTOR.

2. Press the Headphone [CUE] button on CH 1 or CH 2 on DJM-T1.

The Headphone CUE button on the TRAKTOR GUI is lit.

3. Turn the [HEADPHONES LEVEL] knob on DJM-T1.

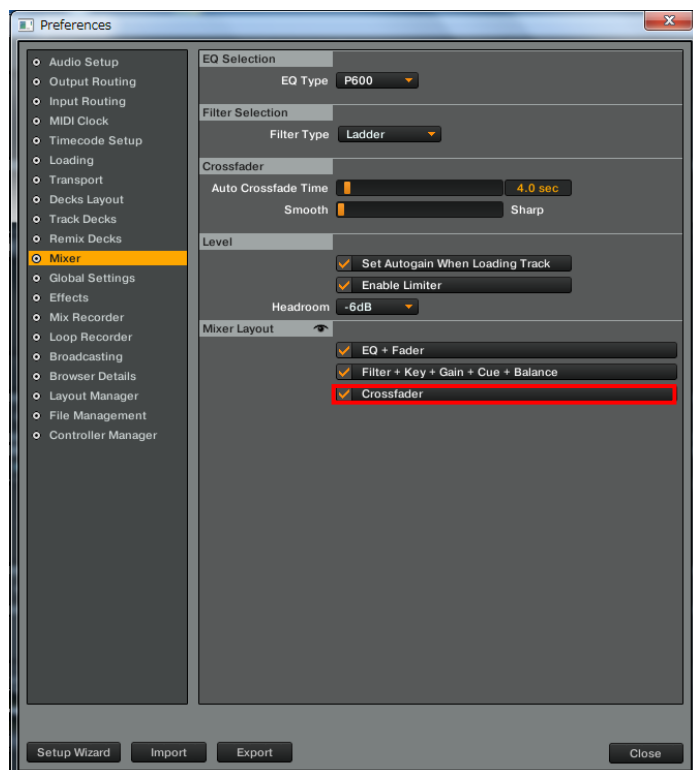
The volume level output from the headphone is adjusted to the appropriate level.

* This knob does not control TRAKTOR.

[Note] When the sound is monitored on the headphone, ensure that the Cue Mix knob on the TRAKTOR GUI is turned to the far end of CUE. Ensure that the Cue Vol knob on the TRAKTOR GUI is at the default position, the position automatically set at when double-clicking the knob.

If the HEADPHONE MIX knob is not displayed on the TRAKTOR GUI, follow the instruction below to display it on TRAKTOR.

Open the [Preferences] and check Crossfader on the [Mixer] page.



About trademarks and registered trademarks

Pioneer is the registered trademark of PIONEER CORPORATION.
TRAKTOR is the registered trademark of Native Instruments GmbH.
Microsoft® is either the registered trademark or trademark of Microsoft Corporation in the United States of America and other countries.
Mac OS is the trademark of Apple Inc. in the United States of America and other countries.

©2012 PIONEER CORPORATION

All rights reserved

PIONEER CORPORATION

1-1, Shin-ogura, Saiwai-ku, Kawasaki-shi, Kanagawa 212-0031, Japan