

*Pioneer*

**DJ MIXER**

**DJM-T1**

“TRAKTOR 2”

Settings File Import Guide

---

## Before start (Important)

Pioneer provides a settings file exclusively for using with the Native Instruments "TRAKTOR PRO 2" DJ software. TRAKTOR PRO 2 can be controlled from this unit by importing this file.

- A computer on which TRAKTOR PRO 2 has been installed is required.
- Not all functions in TRAKTOR PRO 2 are supported. Users should make their own settings as necessary.
- To make additional settings, see [Traktor 2 Application Reference], the TRAKTOR 2 operating manual (PDF file) included with TRAKTOR PRO 2.

### General Disclaimer


- Pioneer will accept no responsibility whatsoever for damages resulting from downloading or installing this settings file. Operation of this settings file is not guaranteed.
- Users should take full responsibility for downloading, installing and using this settings file.
- The specifications of this settings file are subject to change without notice.
- Please note that services regarding this settings file may be terminated without notice.

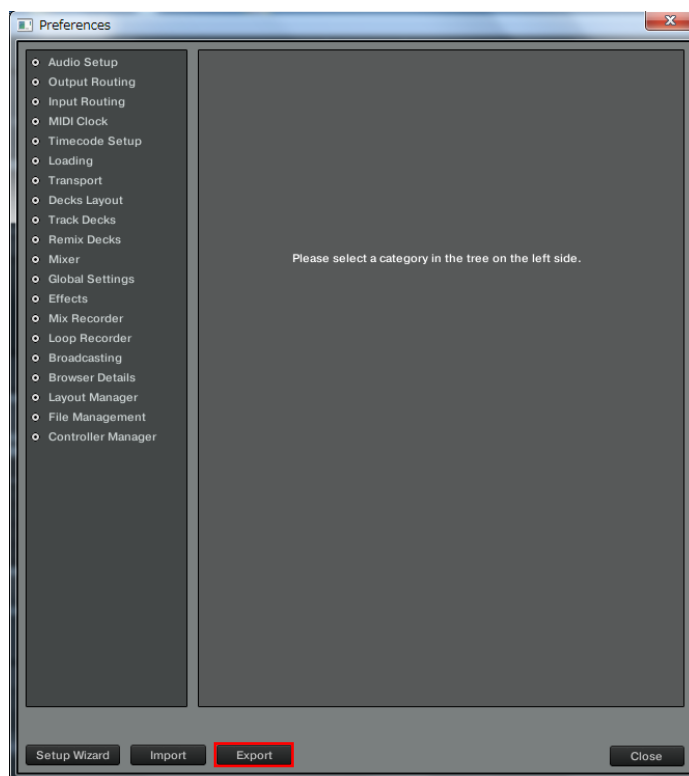
---

## Backing up the current settings file

We recommend backing up the current settings using the procedure below so that those settings can be restored if necessary.

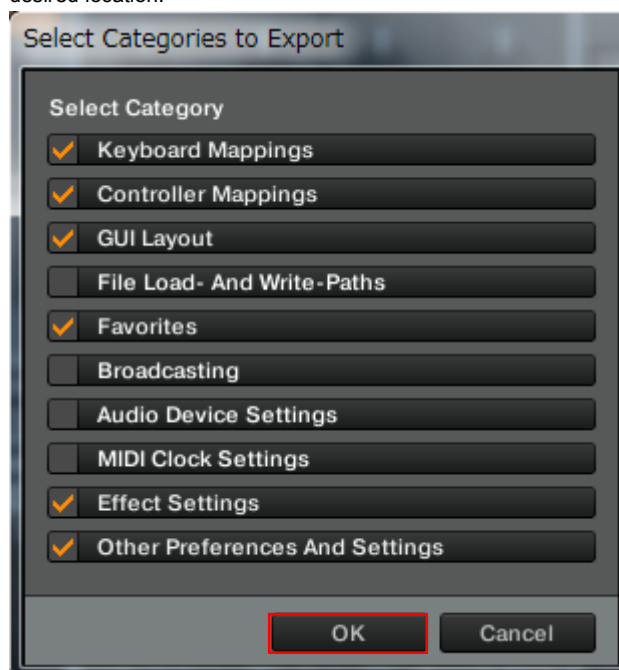
! This operation is not necessary for those using TRAKTOR PRO 2 for the first time.

1. Connect DJM-T1 to a computer using a USB cable and turn on the power of DJM-T1.
2. Launch TRAKTOR PRO 2.
3. Click the  icon on the upper right of the screen.
4. Click [Export] on the [Preferences] window.



### 5. Check the items to be backed up, then click [OK].

Give the file an easily identifiable name (e.g.: **BackUp.tsi**) and save it in a desired location.



# Importing a settings file

### Cautions

When another settings file has been imported, this procedure may not operate properly. In this case, delete the imported settings file before performing this operation. For details, see [Deleting the settings file on page 3](#).

## 1. Access the Pioneer support web site

(<http://pioneerdj.com/support/>) and from the top page go to the DJM-T1 software download page, where you can download the settings file.

The downloaded file is compressed in ZIP format. Unzip it before start.

— For Windows users

Right-click the downloaded file and select [Extract All]. The unzip wizard appears. Specify the folder in which the file is to be unzipped and unzip (decompress) it.

— For Mac OS X users

Double-click the downloaded ZIP file to unzip it.

When unzipped, a file named [PIONEER\_DJM-T1\_Vxxx.tsj] is extracted.

! Depending on the browser you are using, the file may be unzipped automatically. In this case, this unzipping procedure is not necessary.

## 2. Save the file downloaded in step 1 in a desired location.

<Example>

—For Windows

My Documents\Native Instruments\Traktor 2.x.x\Settings

—For Mac OS X

~/Documents/Native Instruments/Traktor 2.x.x/Settings

## 3. Connect the DJM-T1 and a computer using a USB cable, then turn on the power of DDJ-ERGO.

## 4. Launch TRAKTOR PRO 2.

5. Click the  icon on the upper right of the screen.

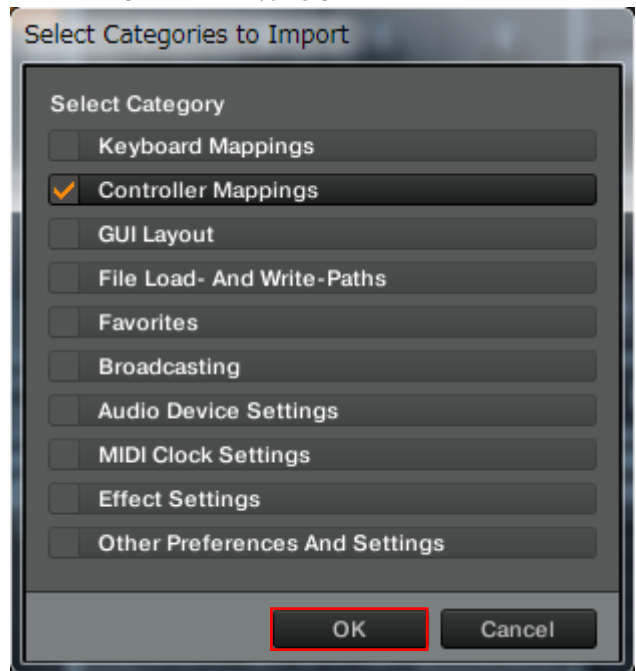
## 6. Click [Import] on the [Preferences] window.

Select the [PIONEER\_DJM-T1\_VXXX.tsj] file saved in step 2.



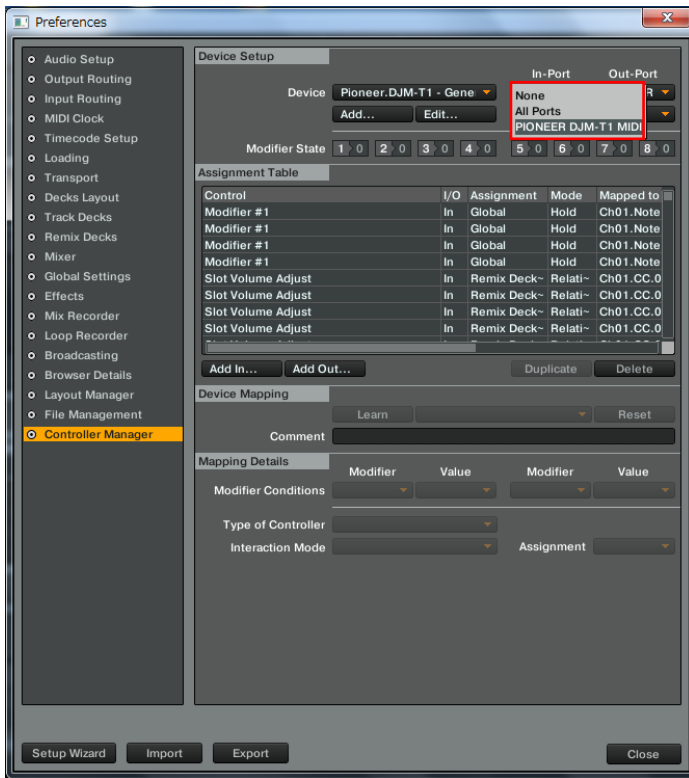
## 7. Click [OK] to load the settings file.

Ensure that [Controller Mappings] is checked.




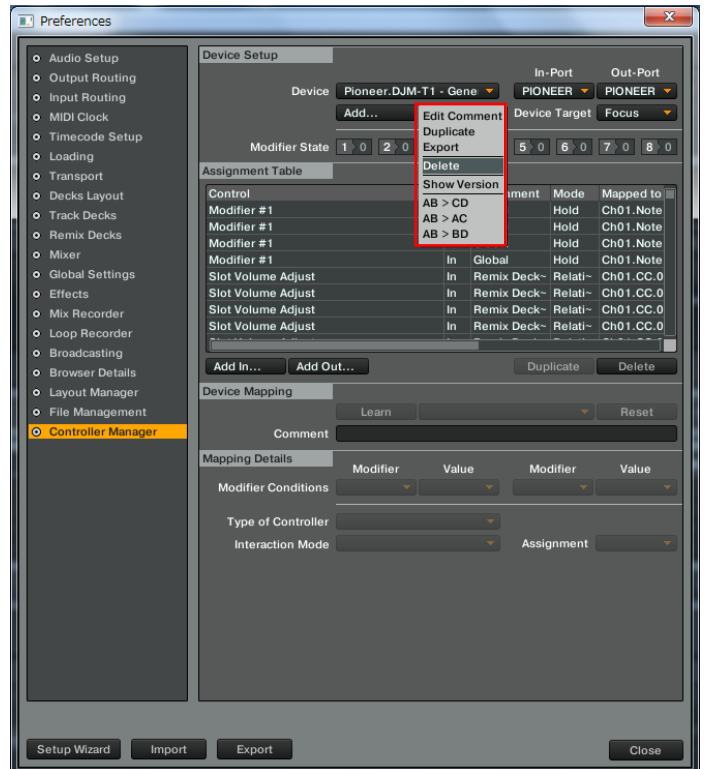
8. Open [Controller Manager], select [Pioneer.DJM-T1] at [Device], then select the device corresponding to the DJM-T1 at [In-Port].

Then, select [Pioneer.DJM-T1 – Generic MIDI] on the same window and select the device corresponding to DJM-T1 at [In-Port] and [Out-Port].

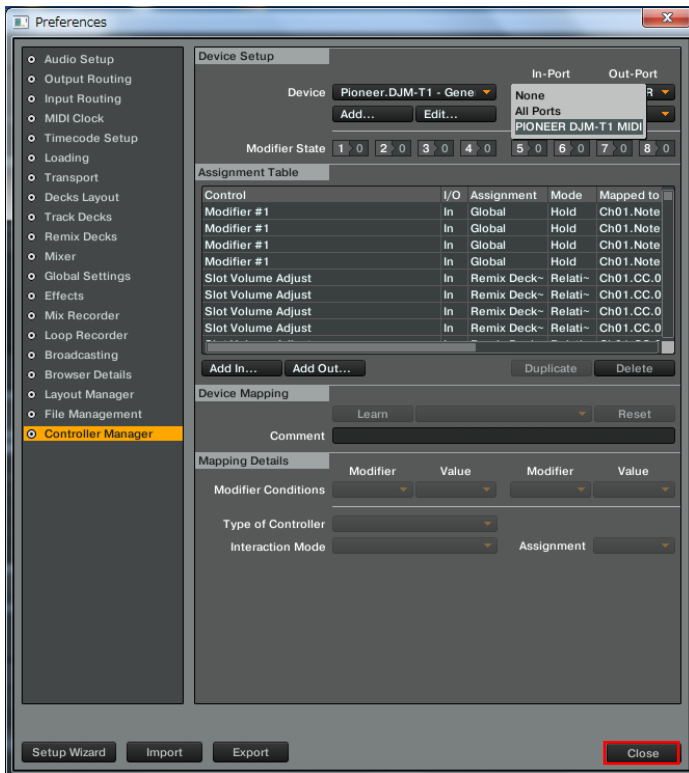


## Deleting the settings file

1. Click the  icon on the upper right of the window.
2. Select [Controller Manager] from the [Preferences] window.
3. From the [Controller Manager] window, select the device to be deleted from [Device], then execute the [Delete] command from the [Edit...].



9. Click [Close] to close the [Preferences] window



## About trademarks and registered trademarks

- Pioneer is a registered trademark of PIONEER CORPORATION.
- TRAKTOR is a registered trademark of Native Instruments.
- Windows® is either a registered trademark or a trademark of Microsoft Corporation in the United States or other countries.
- Mac OS is a trademark of Apple Inc. registered in the United States and other countries.

©2012 PIONEER CORPORATION.

All rights reserved.

**PIONEER CORPORATION**

1-1, Shin-ogura, Saiwai-ku, Kawasaki-shi, Kanagawa 212-0031,  
Japan