

Pioneer

DJ CONTROLLER

DDJ-WEGO

DDJ-WeGO



TRAKTOR PRO 2

Settings File Import Guide

Before start (Important)

Pioneer provides a settings file exclusively for use with the Native Instruments "TRAKTOR PRO 2" DJ software. TRAKTOR PRO 2 can be controlled from this unit by importing this file.

- A computer on which TRAKTOR PRO 2 is installed is required.
- Not all functions of TRAKTOR PRO 2 are supported. Users should make their own settings as necessary.
- To make additional settings, see the TRAKTOR 2 operating manual (PDF file) included with TRAKTOR PRO 2.
- To operate TRAKTOR PRO 2 using this unit's buttons, see the separate "DDJ-WeGO Hardware Diagram for TRAKTOR PRO 2" (PDF file) table of supported functions.

- **First, turn on the power of DDJ-WeGO. Then, run the Traktor PRO2 software. Please note that if you launch them in reverse order, Traktor PRO 2 may not work properly with DDJ-WeGO or audio may not be output.**
- **In this settings file (TSI file), Deck A/C are assigned to the Track Deck and Deck B/D assigned to the Remix Deck. Modifications to other settings are not recommended.**


General Disclaimer

- Pioneer will accept no responsibility whatsoever for damages resulting from downloading or installing this settings file. Operation of this settings file is not guaranteed.
- Users should take full responsibility for downloading, installing and using this settings file.
- The specifications of this settings file are subject to change without notice.
- Please note that services regarding this settings file may be terminated without notice.

Backing up the current settings file

We recommend backing up using the procedure below so that the current settings can be restored if necessary.

- This operation is not necessary for those using TRAKTOR PRO 2 for the first time.

1. Select  (Preference) in the upper right of the screen.

2. On the [Preferences] window, click [Export].



3. Check the items to be backed up, then click [OK].

Give the file an easily identifiable name (e.g.: **BackUp.tsi**) and save it in the desired location.



Importing a settings file

Cautions

When another settings file has been imported before, this procedure may not operate properly. In this case, delete the imported settings file before performing this operation. For details, see “Deleting the settings file” on page 4.

1. Access the Pioneer support web site

(<http://www.prodj.com/support/>) and click “Software Download” of DDJ-WeGO to download the settings file.

The downloaded file is compressed in ZIP format. Unzip it before starting.

— For Windows users

Right-click the downloaded file and select [Extract All]. The unzip wizard appears. Specify the folder in which the file is to be unzipped and unzip (decompress) it.

— For Mac OS X users

Double-click the downloaded ZIP file to unzip it.

When unzipped, a file named [PIONEER_DDJ-ERGO_Vxxx.tsj] is extracted.

/ Depending on the browser you are using, the file may be unzipped automatically. In this case, this unzipping procedure is not necessary.

2. Save the [PIONEER_DDJ-ERGO_Vxxx.tsj] file downloaded in step 1 in the desired location.

Example:

· For Windows


My Documents\Native Instruments\Traktor 2.x.x\Settings

· For Mac OS X

~/Documents/Native Instruments/Traktor 2.x.x/Settings

3. Connect DDJ-ERGO and a computer using the USB cable, then turn on the power of DDJ-WeGO.

4. Launch TRAKTOR PRO 2.

5. Select  (Preference) in the upper right of the screen.

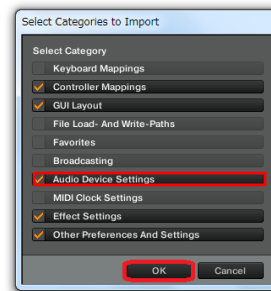
6. Click [Import] on the [Preferences] window.

Select the [PIONEER_DDJ-ERGO_Vxxx.tsj] file saved in step 2.



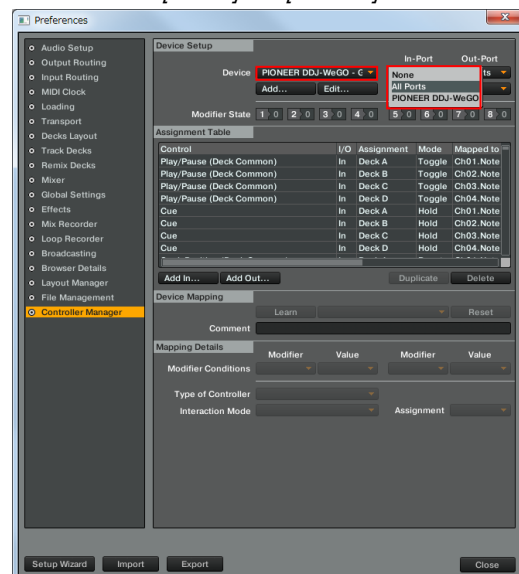
7. Click [OK] to load the settings file.

* [Audio Device Settings] is not selected at this stage. Tick the checkbox of [Audio Device Settings] and press OK.



8. Open [Controller Manager], select [PIONEER DDJ-WeGO] at [Device], then ensure that [All Ports] is selected for [In-Port] and [Out-Port].

*1: If DDJ-WeGO does not work properly in the above settings, select DDJ-WeGO for [In-Port] and [Out-Port].



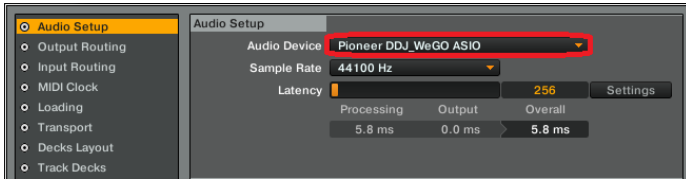
9. Audio-related settings

Follow the instructions below to configure audio-related settings.

(1) Audio Setup

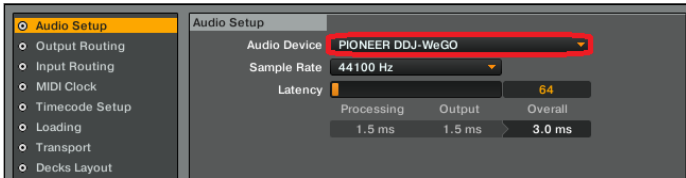
— For Windows

- Audio Device : Pioneer DDJ_WeGO ASIO



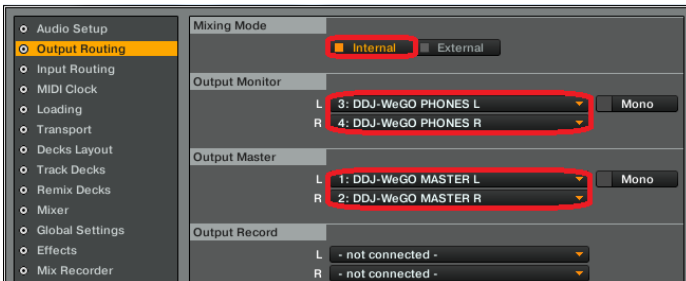
— For Mac OS X

- Audio Device : PIONEER DDJ-WeGO



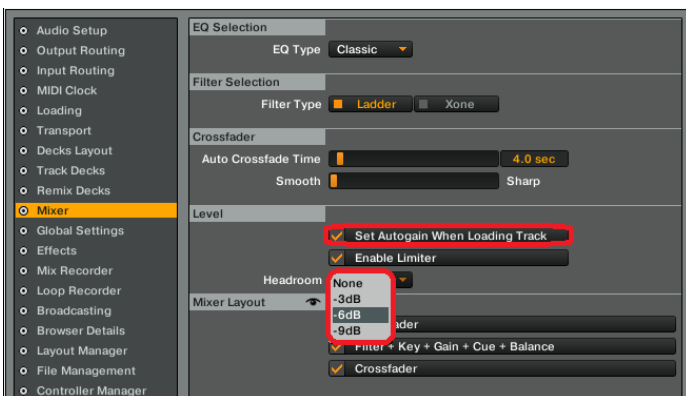
(2) Output Routing

- Mixing Mode : Internal
- Output Monitor :
 - L 3:DDJ-WeGO PHONES L
 - R 4:DDJ-WeGO PHONES R
- Output Master :
 - L 1:DDJ-WeGO MASTER L
 - R 2:DDJ-WeGO MASTER R



(3) Mixer

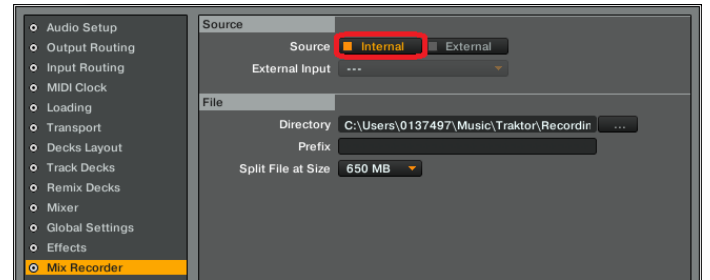
- Level : Check "Set Autogain When Loading Track".
- Headroom : -6dB



* Please note that the audio quality is different from that of Virtual DJ bundled with DDJ-WeGO.

(4) Mix Recorder

- Source : Internal



10. Close TRAKTOR PRO 2 and turn off the power of DDJ-WeGO. Then, after turning on the power of DDJ-WeGO, reboot TRAKTOR PRO 2.

Now, all the settings are completed.

Cautions:

First, turn on the power of DDJ-WeGO. Then, run the Traktor PRO2 software. If you launch them in reverse order, close TRAKTOR PRO 2 and turn off the power of DDJ-WeGO. Then, after turning on the power of DDJ-WeGO, restart TRAKTOR PRO 2 and check all the settings of [9. Audio-related settings].

Please refer to "DDJ-WeGO Hardware Diagram for TRAKTOR PRO 2" (PDF file) in a separate table for features controllable by TRAKTOR PRO 2.

Cautions:

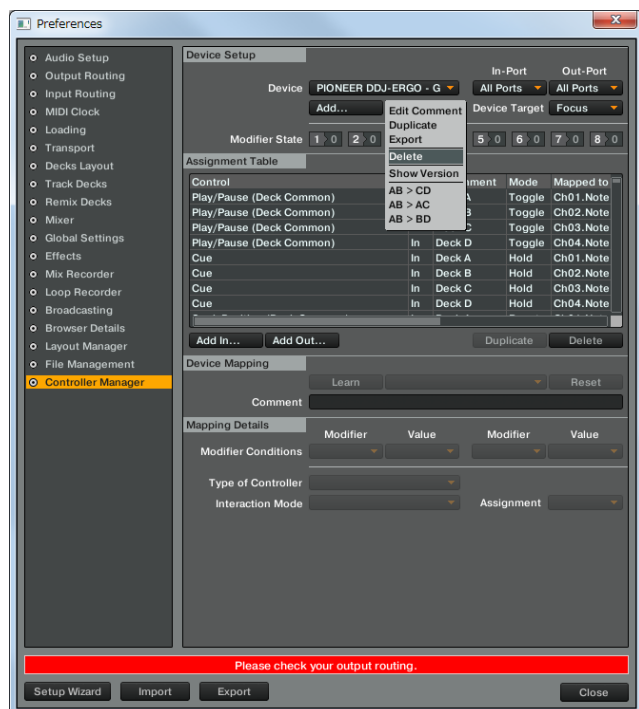
- TRAKTOR PRO 2 is a product of Native Instruments. Pioneer is not in the position of answering any inquiries on the usage of TRAKTOR PRO 2. Please refer to the Operation Manual of TRAKTOR 2 or other resources.

Deleting the settings file

1. Select [Controller Manager] from the [Preference] window.

2. Select the device to be deleted from [Device] and execute the [Delete] command from the [Edit...].

Repeat this process until "None" is shown in [Device].



About trademarks and registered

Trademarks

- Pioneer is a registered trademark of PIONEER CORPORATION.
- TRAKTOR is a registered trademark of Native Instruments.
- Windows® is either registered trademarks or trademarks of Microsoft Corporation in the United States and/or other countries.
- Mac OS is a trademark of Apple Inc., registered in the U.S. and other countries.
- The names of companies, products and technologies in this Guide are registered trademarks or trademarks of each company.

©2012 PIONEER CORPORATION

All rights reserved

PIONEER CORPORATION

1-1, Shin-ogura, Saiwai-ku, Kawasaki-shi, Kanagawa 212-0031, Japan