

Music Production Controller

SLAB



Firmware Update Guide

Update the firmware using your computer

A. Checking the current firmware version of the SLAB

1. Connect your SLAB to your PC/Mac using the USB cable.

2. Opne the Utility screen.

Press and hold the [STRIP MODE] button.

3. Check the firmware version.

The firmware version is displayed on the screen.

B. Checking the downloaded file

1. Unzip the downloaded file.

- For Mac:

Save the downloaded file [SLAB_vxxx_MAC.zip] to a folder such as desktop and unzip it.

- For Windows:

Save the downloaded file [SLAB_vxxx_WIN.zip] to a folder such as desktop and unzip it.

2. Check the unzipped file.

- For Mac:

Check the following file is included in the extracted [SLAB_vxxx_MAC] folder.

[SLAB_vxxx.app]

- For Windows:

Check the following file is included in the extracted [SLAB_vxxx_WIN] folder.

[SLAB_vxxx.exe]

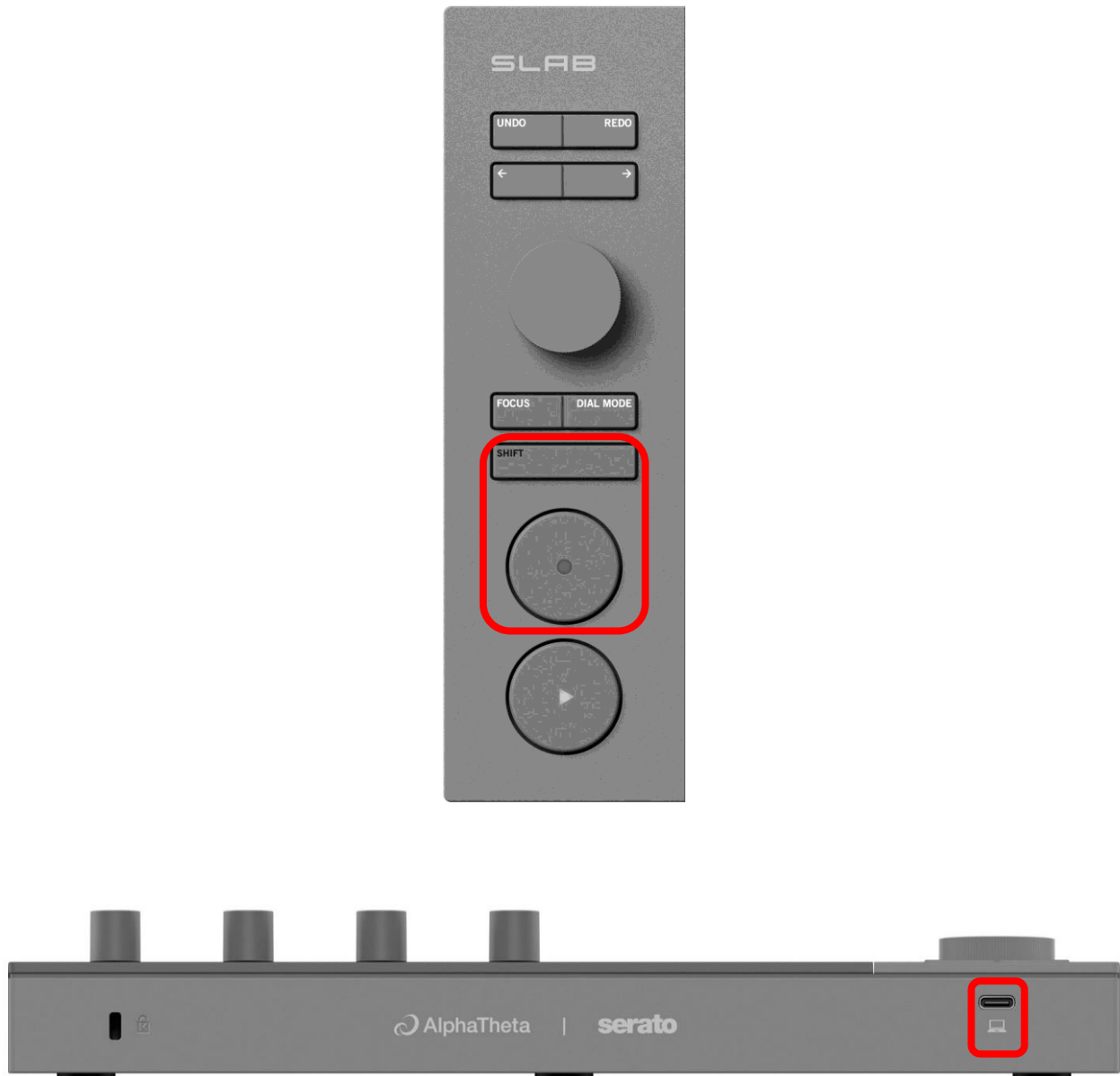
✓ **xxx** is the new version number of the firmware.

✓ Depending on your computer settings, the extension such as .exe or .app may not be displayed.

C. Preparing for the update on the SLAB

1. Activate the update mode.

Press and hold the [SHIFT] button and [REC] button on the SLAB unit while connecting the PC/Mac to the SLAB via a USB cable.



D. Updating the firmware through your PC/Mac

Before updating, close all the applications running on your PC/Mac.

1. Open the updater program.

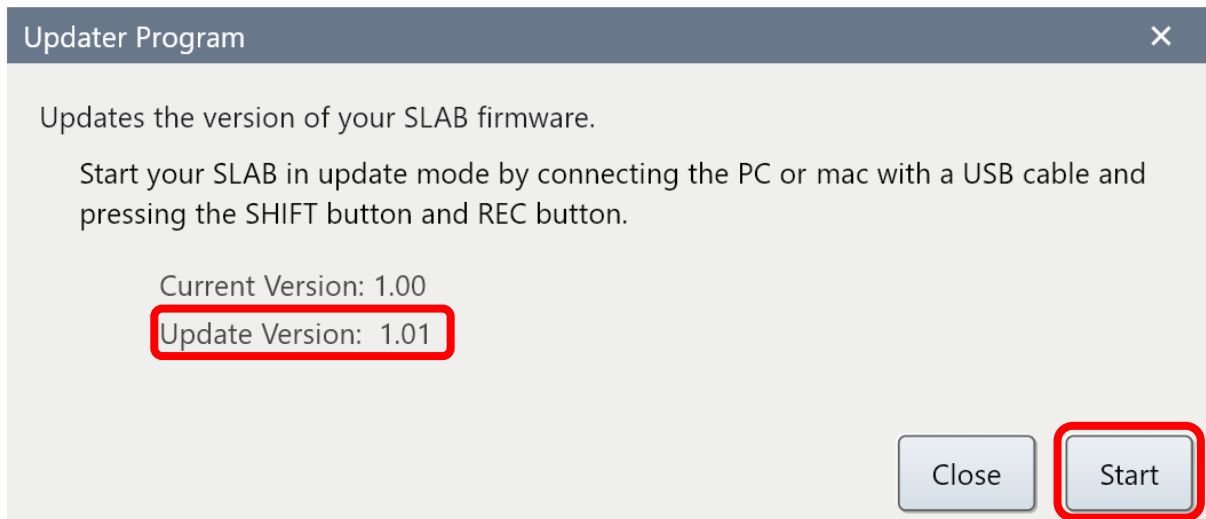
- For Mac:
Double click [SLAB_vxxx.app].
- For Windows:
Double click [SLAB_vxxx.exe].

2. Check the firmware version.

Ensure that the version is **x.xx**. Click “Start”. (The figure below is an example.)

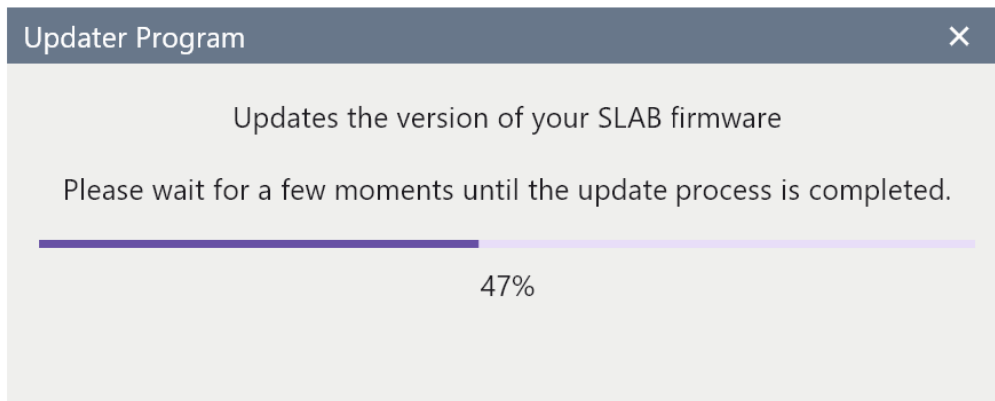
Do not disconnect the USB cable during the update.

Please use an **AC adaptor** to power your laptop during update.



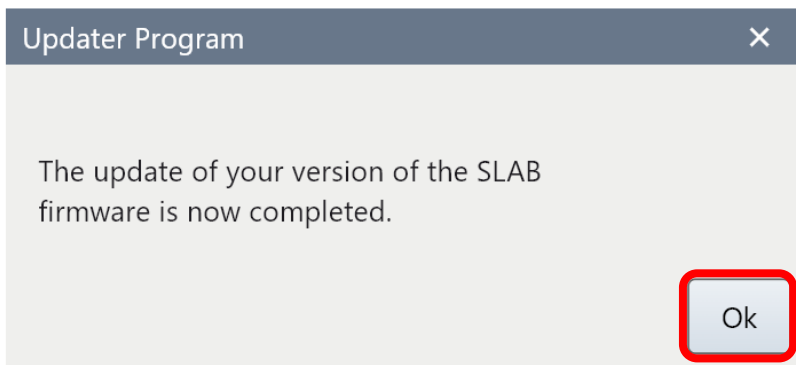
3. During the update.

Please wait until the progress bar reaches to the right end.



4. The update process is complete.

If the message below is displayed, click "OK".



5. Restart the SLAB.

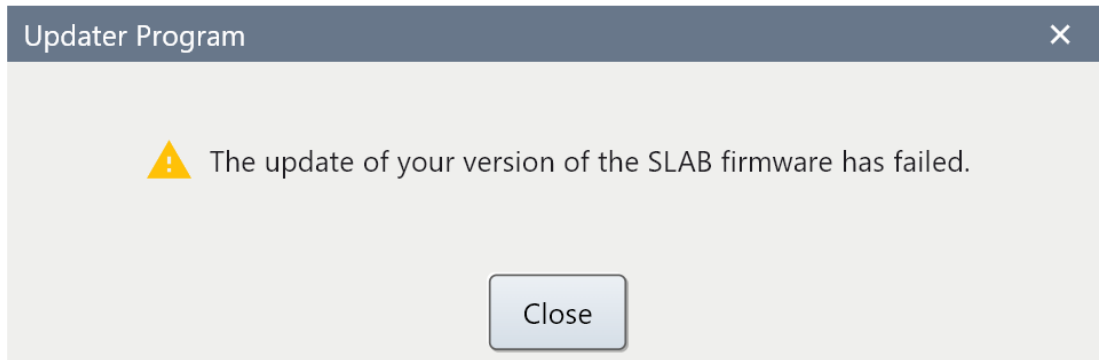
After the update is complete, the SLAB will automatically restart.

E. Checking the firmware version

Check the firmware version of the SLAB as described in "**A. Checking the current firmware version of the SLAB**". When you find the version you wanted, the firmware update is successfully complete.

Tips: When you fail to update the firmware

If you fail to update, close the update program, disconnect the USB cable, reconnect the SLAB to your PC/Mac using the USB cable, and start from “**D. Updating the firmware through your PC/Mac**” again.



[Reference information]

For information on the supported operating systems, visit the URL below.

alphatheta.com/support/

About Trademarks and Registered Trademarks

- Apple, Apple Logo, Apple Music, Finder, iPad, iPadOS, iTunes, Mac, MacBook, MacBook Pro, macOS and OS X are trademarks of Apple Inc., registered in the U.S. and other countries and regions.
- Windows is a trademark or registered trademark of Microsoft Corporation in the U.S. and other countries.
- Other product, technology and company names, etc. mentioned herein are trademarks or registered trademarks of their respective owners.

©2025 AlphaTheta Corporation. All rights reserved.

AlphaTheta Corporation

6F, Yokohama i-Mark Place, 4-4-5 Minatomirai, Nishi-ku, Yokohama, Kanagawa 220-0012 Japan