

Pioneer Dj

DJ MIXER

DJM-250MK2



Firmware Update Guide

A. How to check the current Firmware Version of DJM-250MK2

1. Connect DJM-250MK2 to your computer using a USB cable.

2. Launch the Settings Utility.

For Windows:

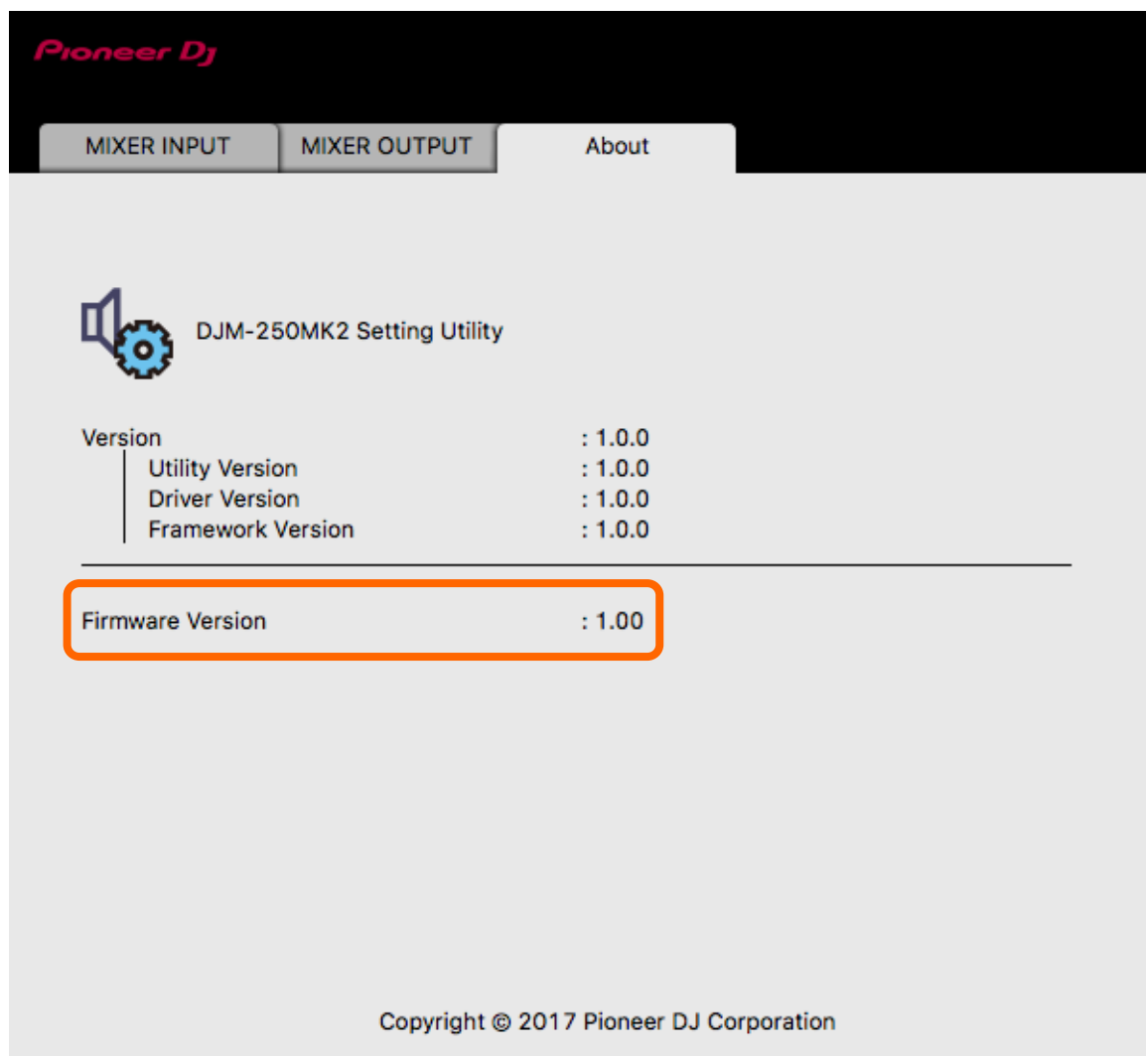
[Start] menu > [All Programs] > [Pioneer] -> [DJM-250MK2] -> [DJM-250MK2 Settings Utility]

For Mac OS:

[Application] > [Pioneer] > [DJM-250MK2] > [DJM-250MK2 Settings Utility]

3. Check the Firmware Version in the Settings Utility

The firmware version is displayed in the [About] tab.



B. Check the downloaded file

1. Unzip the downloaded file.

For Windows:

Save the downloaded file [DJM-250MK2_vxxx_Win.zip] to an arbitrary directory such as desk top and unzip it.

For Mac OS:

Save the downloaded file [DJM-250MK2_vxxx_Mac.dmg] to an arbitrary directory such as desk top and double click to mount it.

2. Check the unzipped file.

For Windows:

The [DJM-250MK2_vxxx_Win] folder is generated when the file is unzipped.

Please ensure the following files are included in the folder.

[DJM-250MK2_vxxx.exe]

For Mac OS:

The [DJM-250MK2_vxxx_Mac] folder is generated when the file is extracted.

Please ensure the following files are included in the folder.

[DJM-250MK2_vxxx.app]

- ✓ xxx is numeric characters of the new firmware version.
- ✓ Depending on your computer settings, the extension such as .exe or .app may not be displayed.

C. Preparation for updating DJM-250MK2

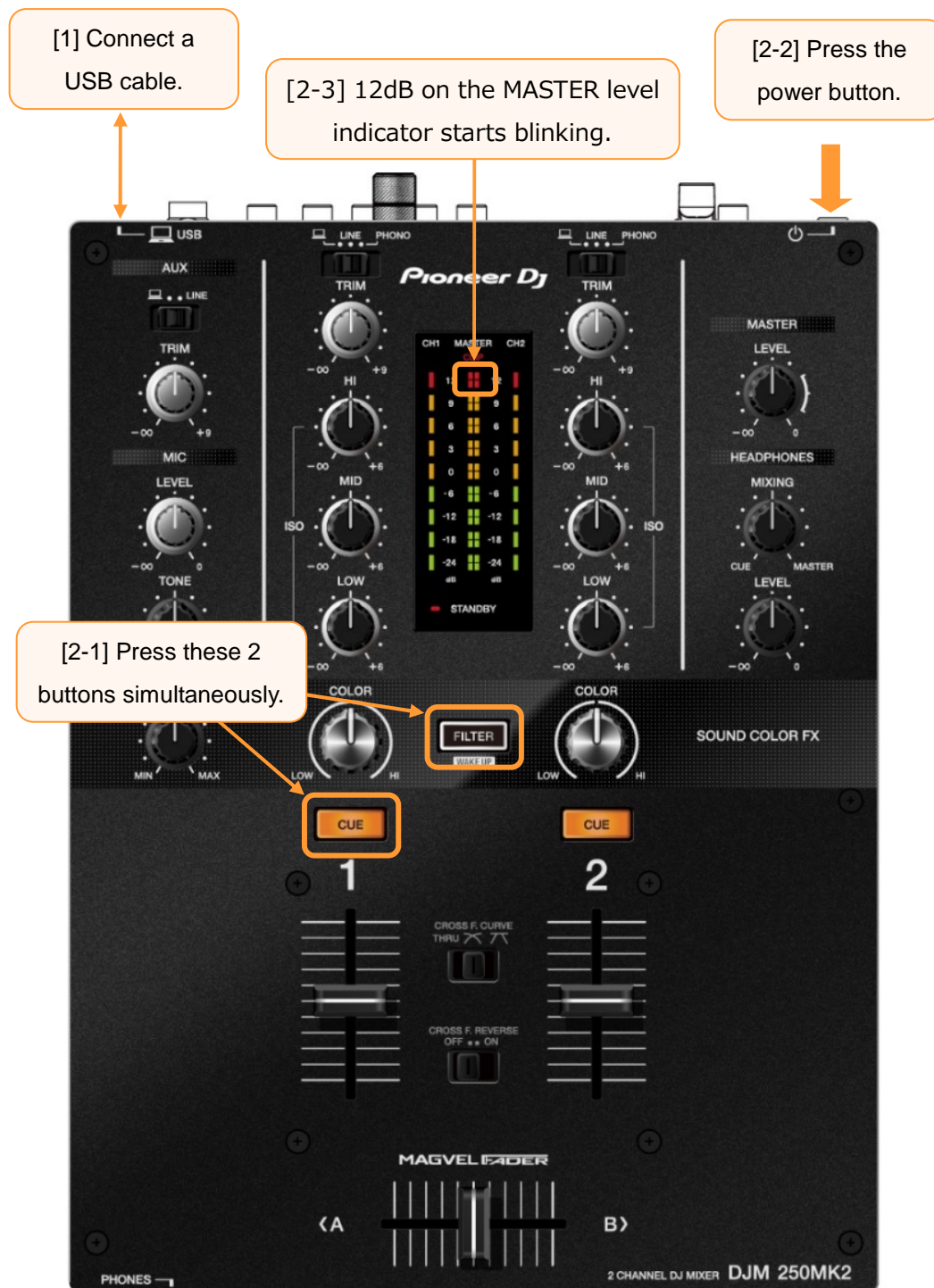
1. Connect DJM-250MK2 and a computer.

Connect DJM-250MK2 to your computer using a USB cable.

2. Start the update mode.

Press the power button while pressing the [FILTER] button and the [CH1 CUE] button.

When the update mode started, 12dB on the MASTER level indicator starts blinking.



D. Updating the firmware using a computer

1. Updating procedures.

Before updating, close all the applications running on the computer.

<STEP1> Start the update program.

For Windows:

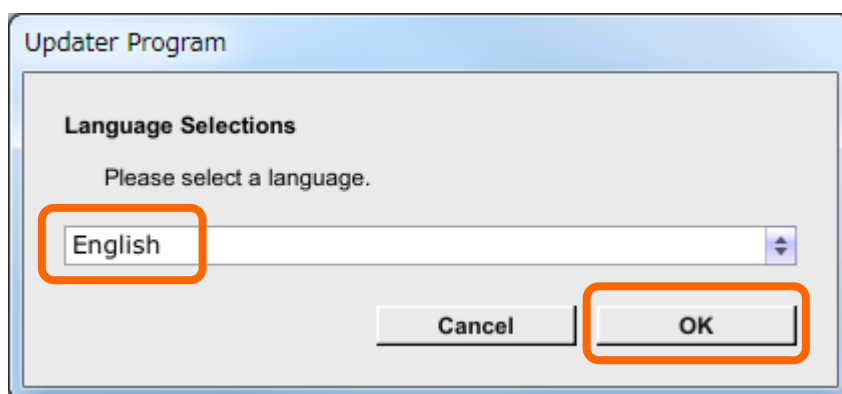
Double click [DJM-250MK2_vxxx.exe] to activate the update file.

For Mac OS:

Double click [DJM-250MK2_vxxx.app] to activate the update file.

<STEP2> Select a language.

Select the language you want to use and click on [OK].



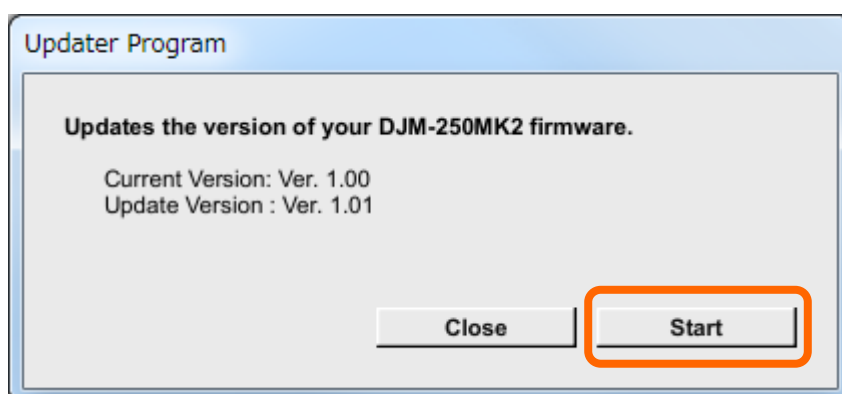
•Please refer to "Tips: When [Your DJM-250 is not recognized] is shown" in a later section if the same message is popped up after clicking "OK".

<STEP3> Check the firmware version.

After ensuring the firmware version, click on the [Start] button.

Ensure that the power cable and the USB cable are securely connected to the DJM-250MK2 during the update.

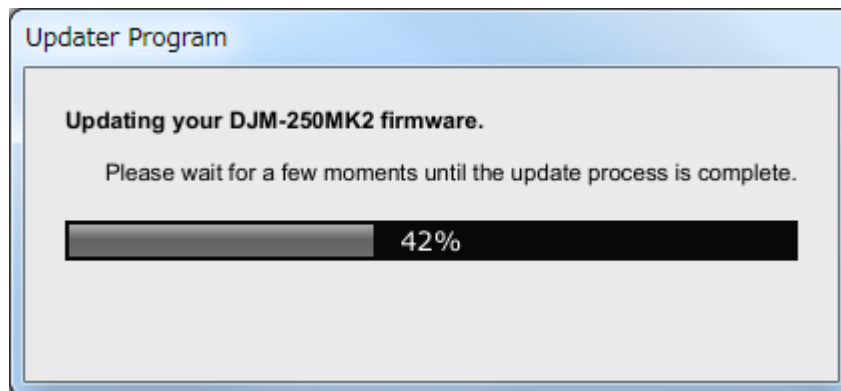
Please make sure to use an AC adaptor to power your laptop during updating the firmware.



The updating process starts.

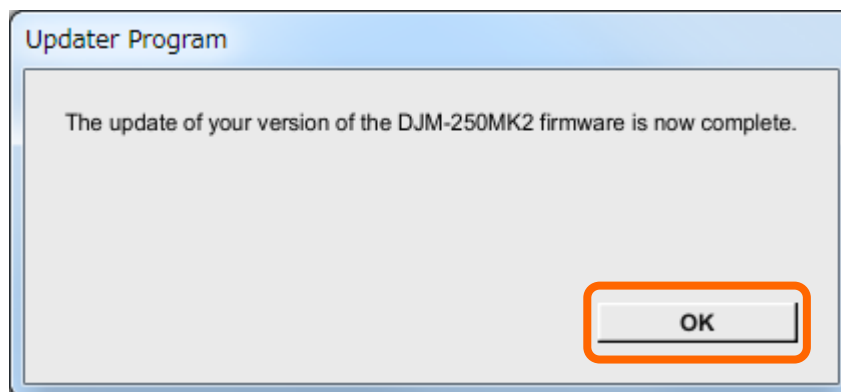
Please wait until the progress bar reaches to the right end.

Approximately 30 seconds is required for updating.



<STEP4> Complete the updating process.

When the firmware update process is complete and the message below appears, click on the [OK] button.



After the update process finished, the DJM-250MK2 is ready to use.

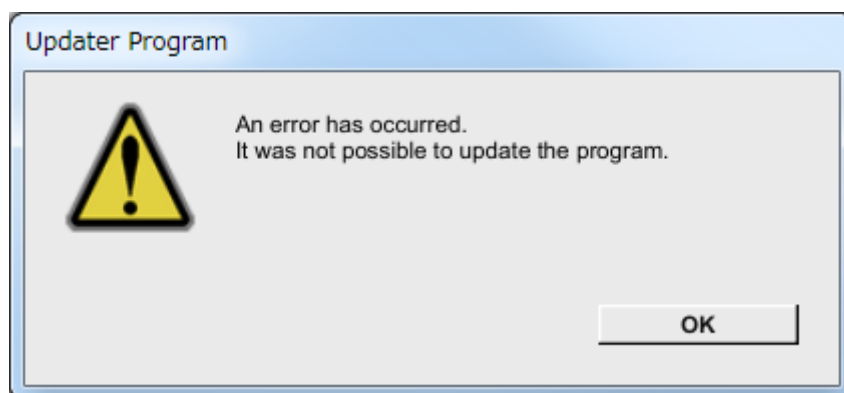
E. Check the firmware version

Check the firmware version of the DJM-250MK2 as described in [A. How to check the current Firmware Version of DJM-250MK2].

The firmware update is successfully completed when you find the version you wanted in the Settings Utility. If not, turn off the power of the DJM-250MK2 and try [D. Updating the firmware using a computer] again.

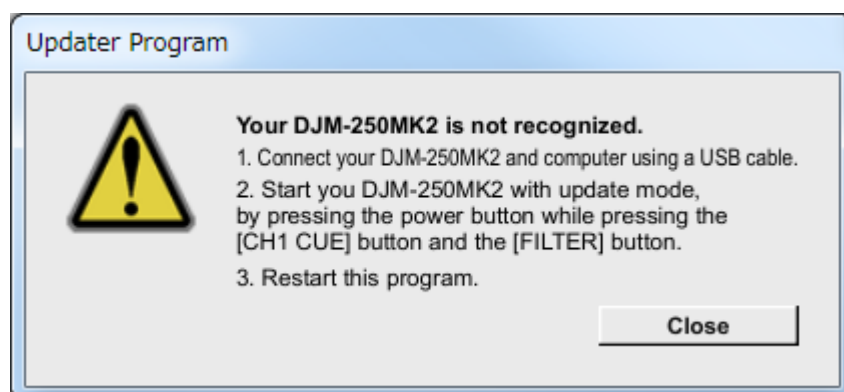
Tips: How to cope with abnormal termination

If you fail to update and the following message appears, turn off the power of the DJM-250MK2 and start from the beginning of the above Updating Procedures.



Tips: When [Your DJM-250MK2 is not recognized] is shown

When the following message appears after selecting a language, please follow the instructions in the message.



About trademarks and registered trademarks

- Pioneer DJ is a trademark of PIONEER CORPORATION, and is used under license.

©2017 Pioneer DJ Corporation. All rights reserved.

Pioneer DJ Corporation

6F, Yokohama i-Mark Place, 4-4-5 Minatomirai, Nishi-ku, Yokohama, Kanagawa 220-0012 Japan