



Multi Player Series

Driver Installation Guide

About the driver software (Windows)

This driver software is an exclusive ASIO driver to output audio signals from the computer by using Multi Player. To use Multi Player by connecting the unit to a computer on which Windows is installed, install the driver software on the computer beforehand.

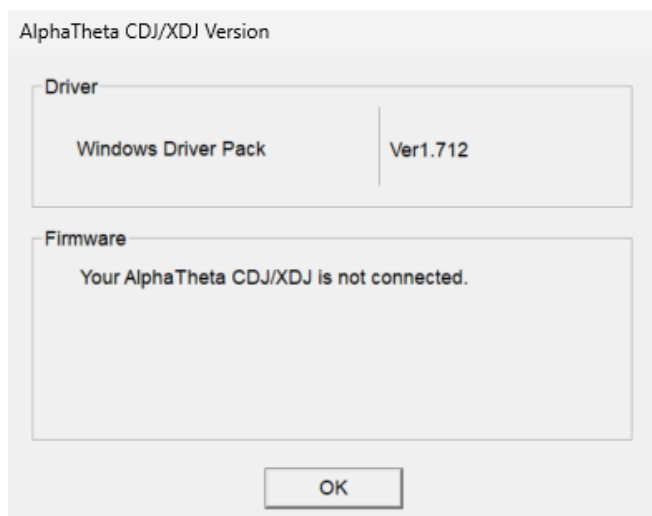
- While using a macOS installed computer, use the standard driver software already installed on the OS (installation is not required).

Cautions on Installation

- Before installing the driver software, be sure to turn off the power of Multi Player and disconnect the USB cable from both Multi Player and your computer.
- If you connect Multi Player to your computer without installing the driver software first, an error may occur on your computer depending on the system environment.
- If you have discontinued the installation process in progress, step through the installation process again from the beginning according to the following procedure.
- Read *Software end user license agreement* carefully before installing the driver software.
- Before installing the driver software, terminate all other programs running on your computer.
- The driver software is compatible with the following OSs.
 - Windows 11, Windows 11 Pro, Windows 10, Windows 10 Pro
- The driver software's installer includes installation programs in the following 12 languages.
English, French, German, Italian, Dutch, Spanish, Portuguese, Russian, Simplified Chinese, Traditional Chinese, Korean, and Japanese
When using an operating system in any language besides the ones listed above, select **[English]** during the installation procedure.

Checking the version of the driver software

Click the Windows **[Start]** menu>**[All apps]**>
[AlphaTheta]> **[CDJXDJ Version Display Utility]**.



- You can check the firmware version of Multi Player on this screen.
- The firmware version is not displayed when Multi Player is not connected to the computer, or when Multi Player and the computer are not properly communicating.

Installing the driver software

- Read *Cautions on Installation* carefully before installing the driver software.
- To install or uninstall the driver software, you need to be authorized by the administrator of your computer. Log on as the administrator of your computer before proceeding with the installation.

1 Double-click on the AlphaTheta_CDJXDJ_Driver_#.###.exe file you have downloaded.

- #.### indicates the driver software's version.
- A security warning screen may appear. If this happens, check the program name and click "Execute".

2 When the Language Select screen appears, select [English] then click [OK].

3 When the [License] screen appears, read the software end user license agreement carefully, and if you agree, check the [I agree] checkbox then click [OK]. Installation begins.

- If you do not consent to the provisions of the *Software end user license agreement*, click **[Cancel]** and stop installation.
- A **[Hardware Installation]** screen may appear during the installation process. If so, click **[Continue Anyway]** to continue installation.
- A **[Checking for Open Applications]** screen may appear. If any other programs are running on the computer, quit them all, then click **[YES]**.

4 Once installation is completed normally, the [Installation is now complete.] screen appears. Click [Finish].

Connecting Multi Player to the computer

1 Connect Multi Player to your computer via USB cable.

2 Press [POWER].

Turn on the power of Multi Player.

- The message **[Installing device driver software]** may appear when Multi Player is first connected to the computer, or when it is connected to a different USB port on the computer. Wait a while until the message **[Your devices are ready for use]** appears.
 - **[Can Windows connect to Windows Update to search for hardware?]** may appear while the installation is in progress. Select **[No, not this time]** and click **[Next]** to continue with the installation.
 - **[What do you want the wizard to do?]** may appear while the installation is in progress. Select **[Install the software automatically (Recommended)]** and click **[Next]** to continue with the installation.

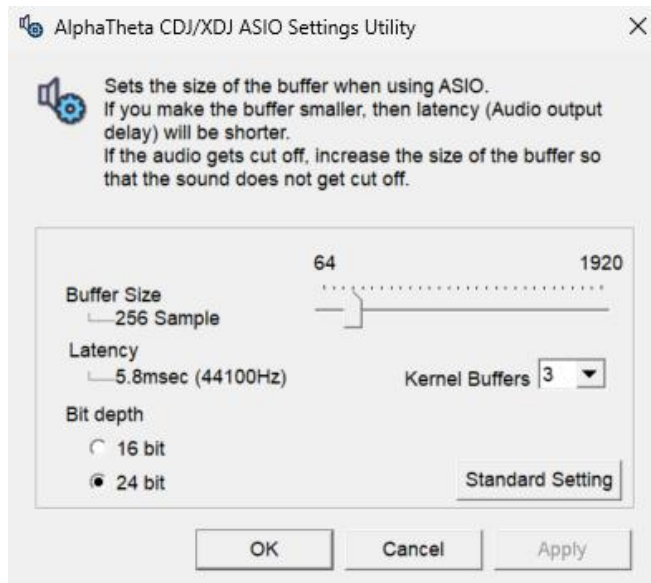
- If **[Hardware Installation]** appears on the screen while the installation is in progress, click **[Continue Anyway]** and continue with the installation.

Adjusting the buffer size and bit depth

Multi Player functions as an audio device conforming to the ASIO standards.

- If an application using Multi Player as the default audio device (DJ software, etc.) is running, quit that application before adjusting the buffer size.

Click the Windows **[Start]** menu>**[All apps]**>**[AlphaTheta]**> **[CDJXDJ ASIO Settings Utility]**.



- If the buffer size is made large, drops in audio data (breaks in the sound) occur less easily, but the time lag due to the delay in the transfer of the audio data (latency) increases.
- For the bit number, specify the bit depth during ASIO playback.
Please set the bit depth up to the model as below chart.

Model	Recommended bit depth	Note
CDJ-350	16bit	Those models are 16 bit players. Please set it to 16 bit. 24 bit signal will be converted to 16 bit.
CDJ-400		
CDJ-400-K		
CDJ-850		
CDJ-900	24bit	Those models are 16 bit/24 bit players. Please set it to 24 bit.
CDJ-900NXS		
CDJ-2000		
CDJ-2000NXS		
CDJ-2000NXS2		
CDJ-TOUR1		
CDJ-3000		
CDJ-3000X		
XDJ-1000		
XDJ-700		
XDJ-1000MK2		

- Operate referring to the procedure below to adjust the buffer size and kernel buffer.

If there are no interruptions in the sound with the default settings

- 1 Gradually decrease the buffer size, setting it to the minimum value at which there are no interruptions in the sound.
- 2 Set the kernel buffer size to [2] and check whether there are interruptions in the sound.
 - If there are interruptions in the sound, set the kernel buffer size to [3].

If there are interruptions in the sound with the default settings

Set the kernel buffer size to [4], then set the buffer size to the minimum value at which there are no interruptions in the sound.

Checking the latest information on the driver software

See the following website for the latest information on the driver software.

alphatheta.com/support/

About trademarks and registered trademarks

- Windows is a trademark or registered trademark of Microsoft Corporation in the U.S. and other countries.
- macOS is a trademark of Apple Inc., registered in the U.S. and other countries and regions.
- ASIO is a trademark or registered trademark of Steinberg Media Technologies GmbH.
- Other product, technology and company names, etc. mentioned herein are trademarks or registered trademarks of their respective owners.